

S T O R A G E

AREA = 53.9172 acres  
PARCEL ①

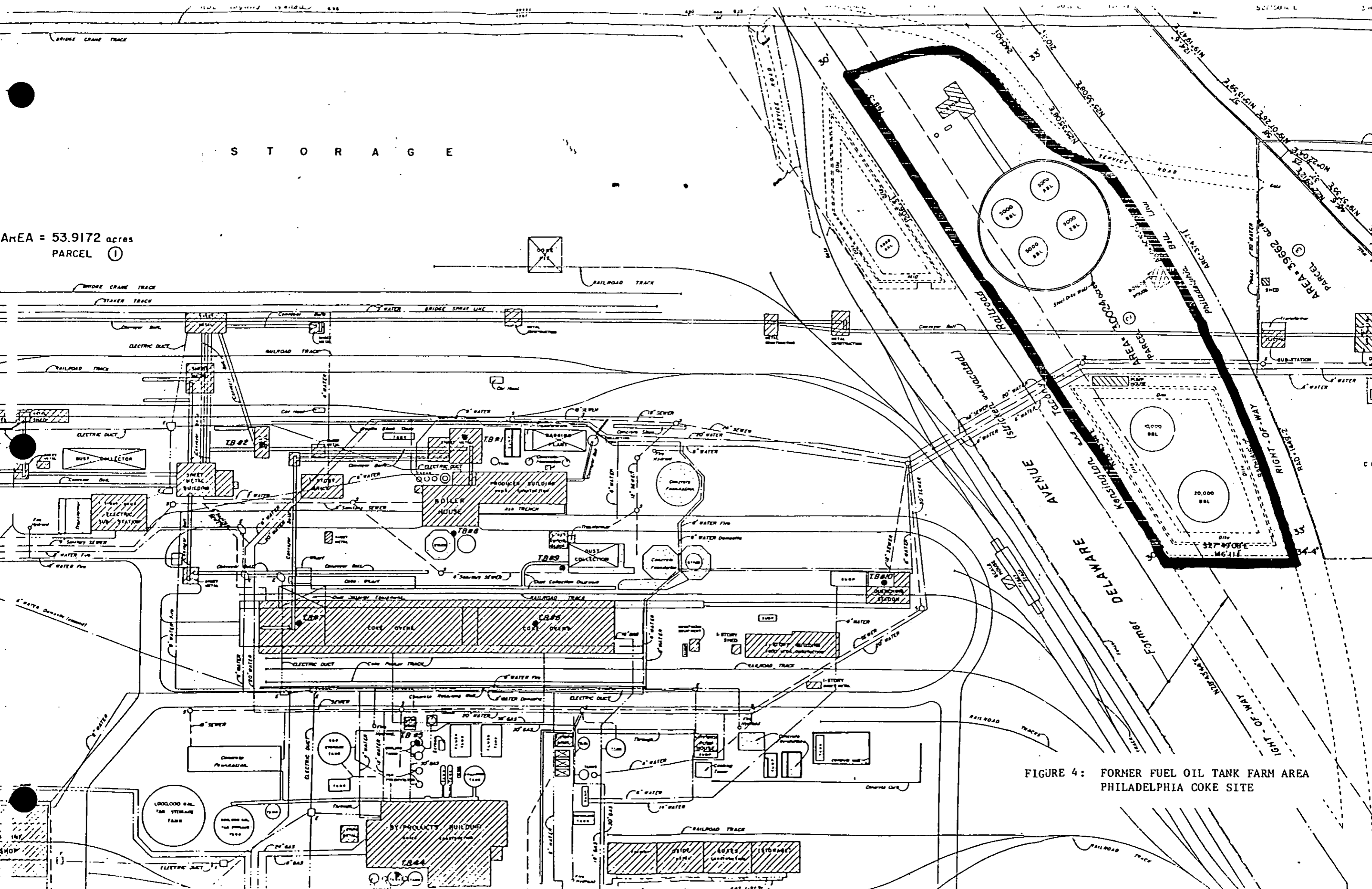
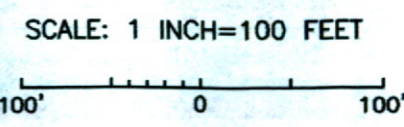
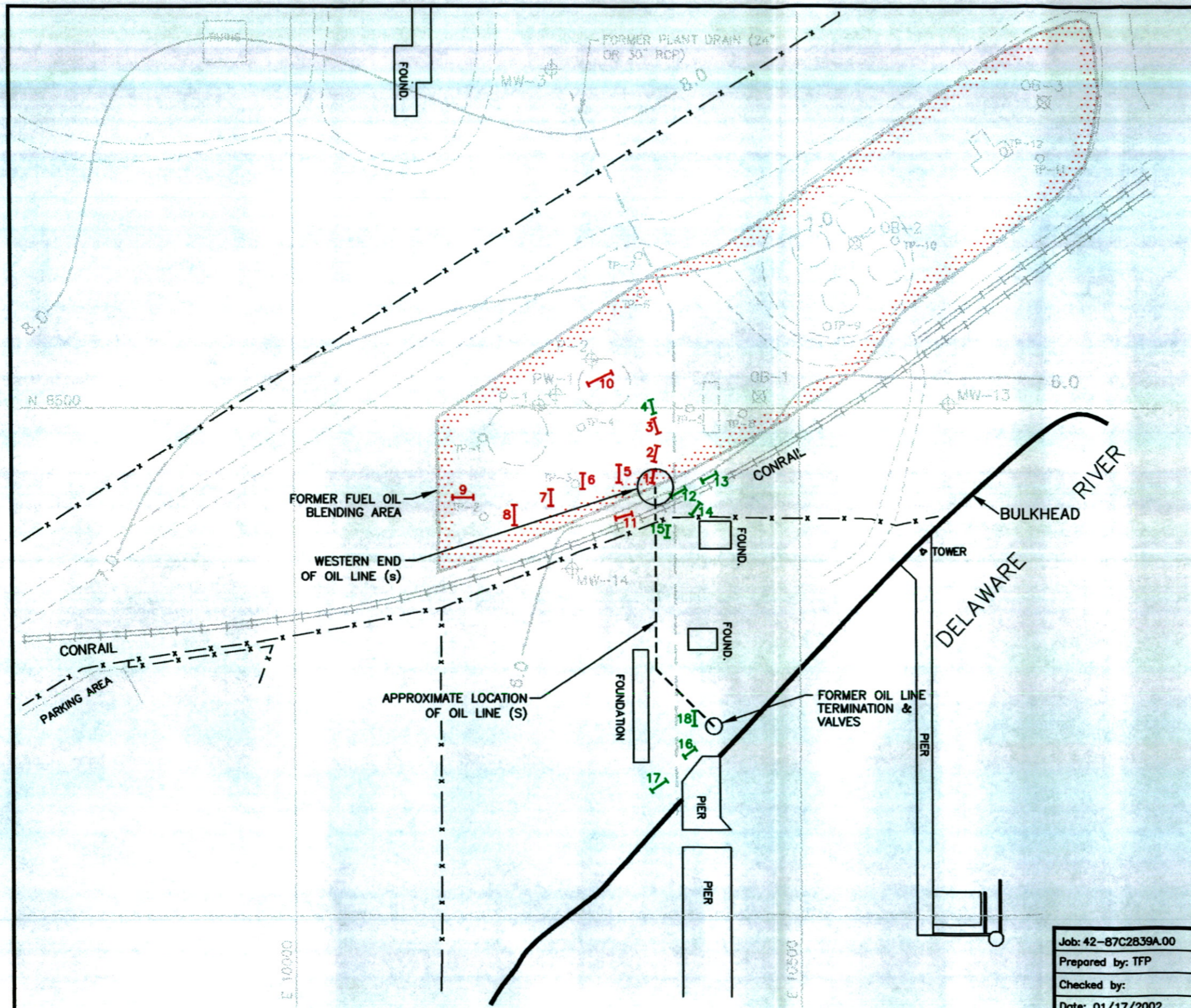


FIGURE 4: FORMER FUEL OIL TANK FARM AREA  
PHILADELPHIA COKE SITE



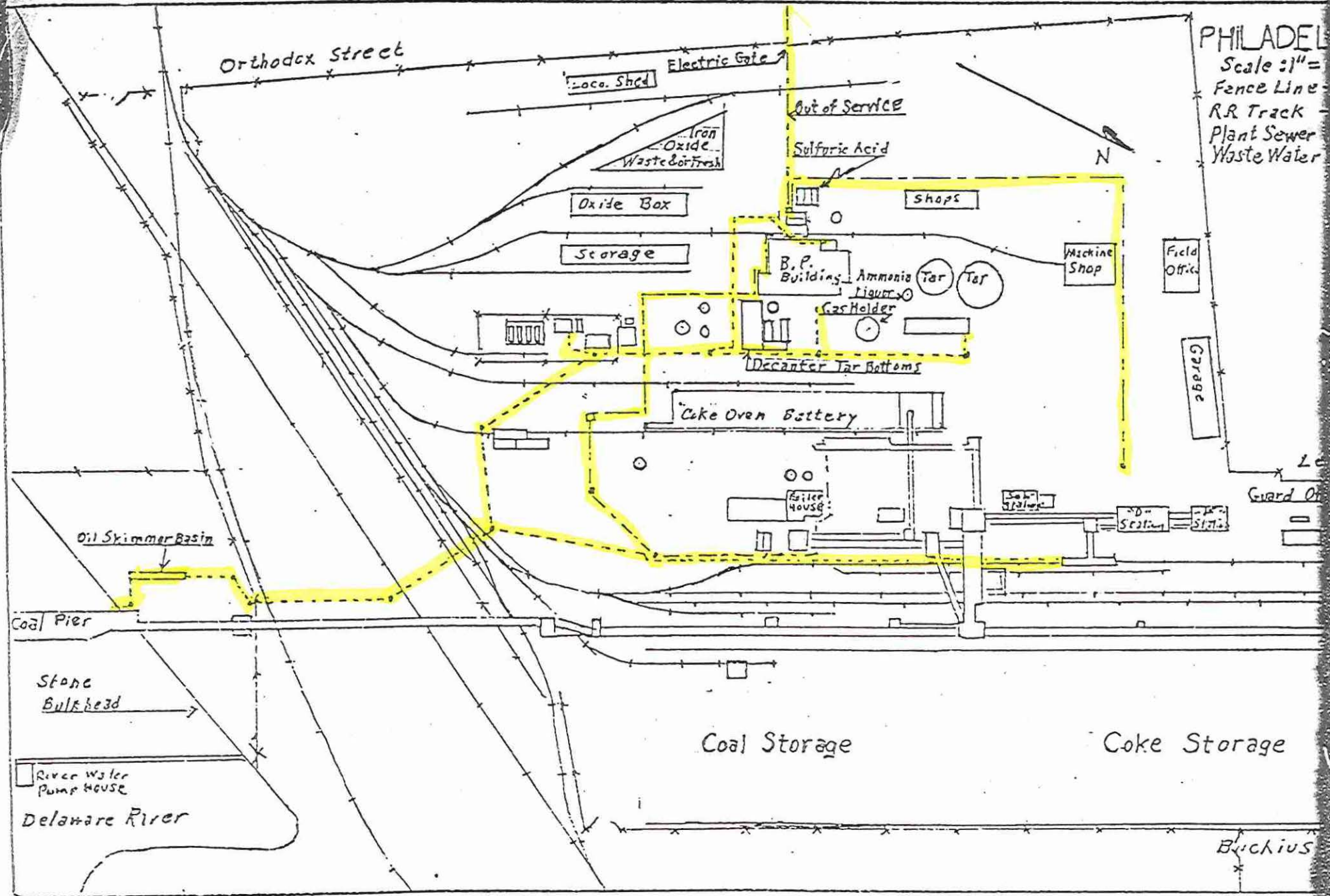
- LEGEND:**
- 9I TEST PITS (2001) WITH VISIBLE OIL CONTAMINATION
  - 18I TEST PITS (2001) WITH NO VISIBLE OIL CONTAMINATION
  - MW-13 WELLS / PIEZOMETERS
  - TP-20 TEST PITS (1989)
  - OB-3 BORINGS (1990)
  - 6.0 1995 INTERPOLATED WATER TABLE ELEVATION CONTOURS (1' INTERVAL; FT, MSLD)

NOTE: ALL LOCATIONS APPROXIMATE

Job: 42-87C2839A.00  
 Prepared by: TFP  
 Checked by:  
 Date: 01/17/2002

2001 SUBSURFACE INVESTIGATION  
 FORMER FUEL OIL BLENDING AREA  
 FORMER PHILADELPHIA COKE COMPANY PROPERTY  
 PHILADELPHIA, PENNSYLVANIA

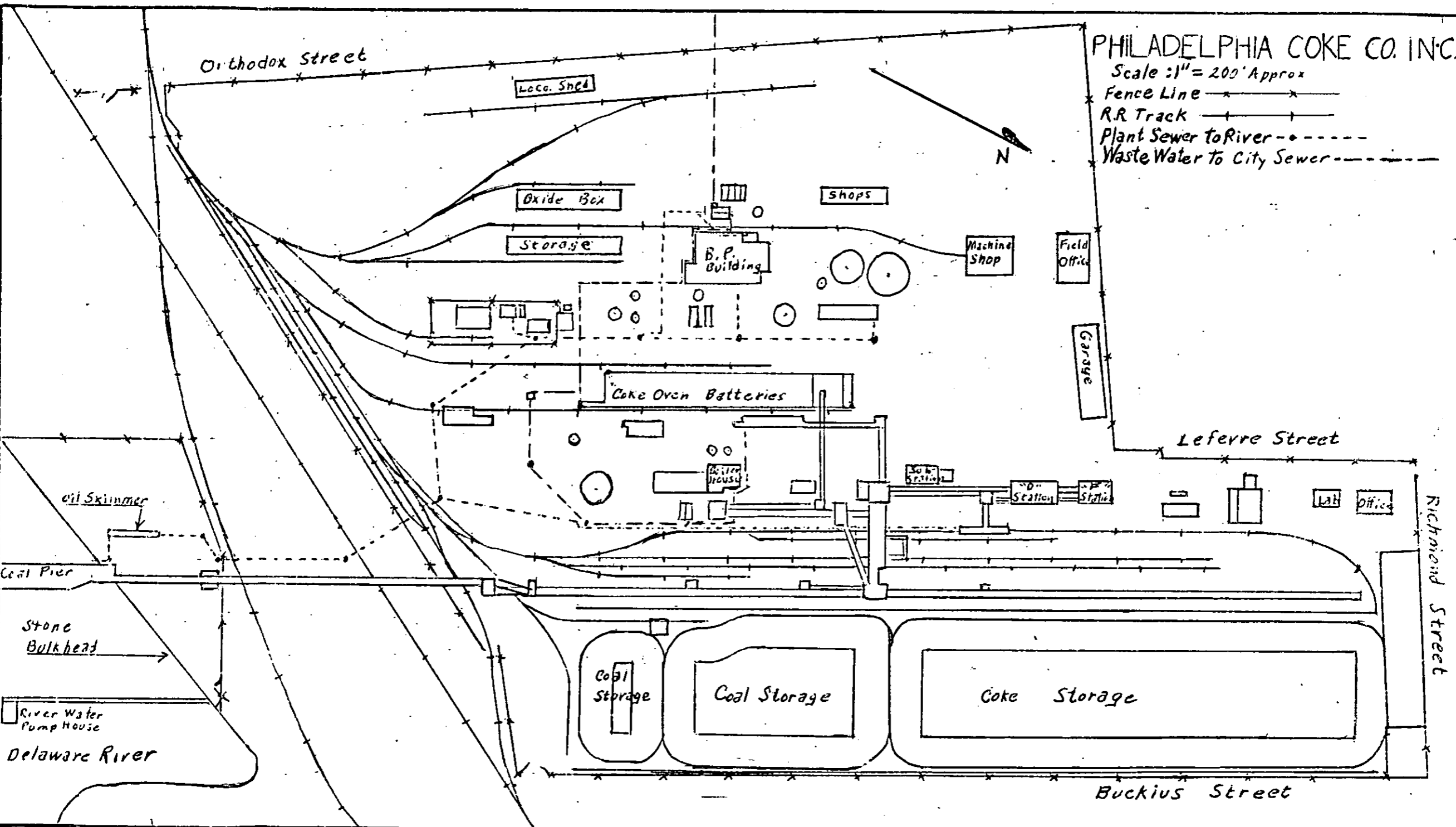
FIGURE 1

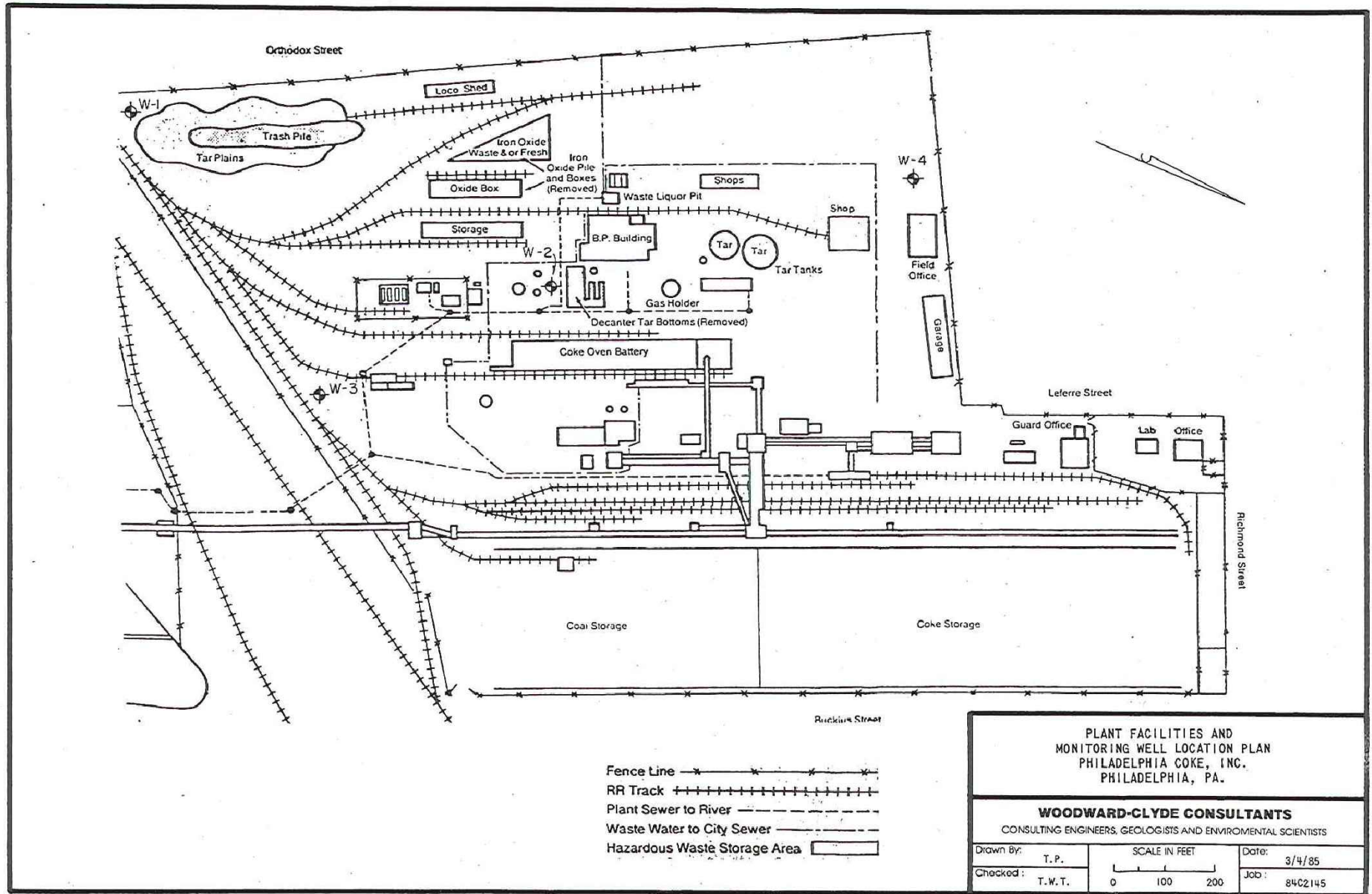


PHILADELPHIA COKE CO. INC.

Scale : 1" = 200' Approx

- Fence Line ————
- R.R. Track ————
- Plant Sewer to River - - - - -
- Waste Water to City Sewer - - - - -





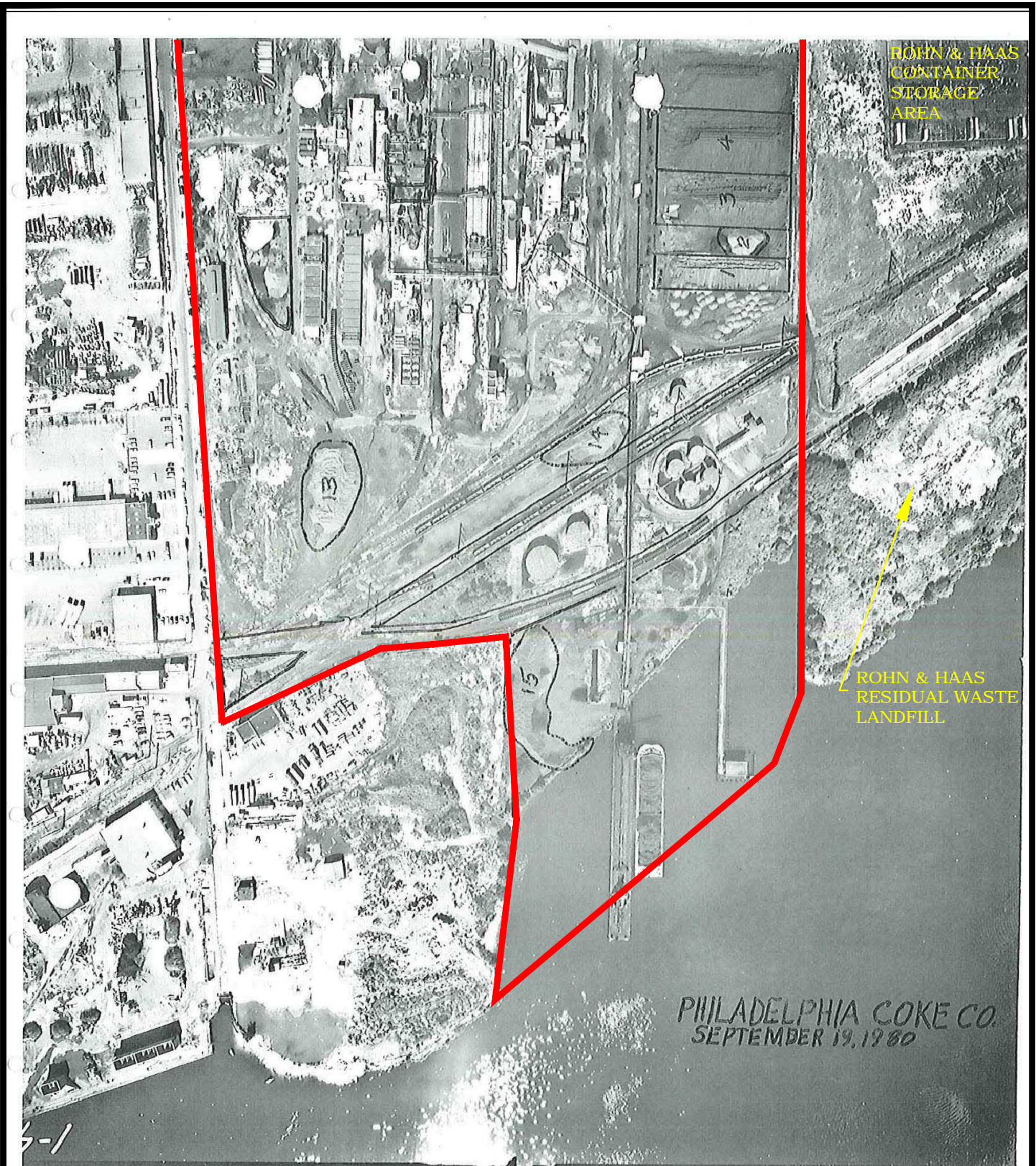
SCALE: AS SHOWN  
S.O. NO.: 120686  
DSN/DWN:MM/WJH

DATE:FEBRUARY 2011  
FILE: 120686-PCC-03  
CHK: SRF

**Baker**

MICHAEL BAKER JR., INC.  
MOON TOWNSHIP, PENNSYLVANIA

**FIGURE 3**  
FACILITY LAYOUT, MAIN AREA  
PHILADELPHIA COKE COMPANY  
4501 RICHMOND STREET  
PHILADELPHIA, PENNSYLVANIA 19137



Source:  
 WASTE PERMIT APPLICATION  
 NOVEMBER 18, 1980 (BASEMAP)  
 PADEP INSPECTION, AUGUST 1990

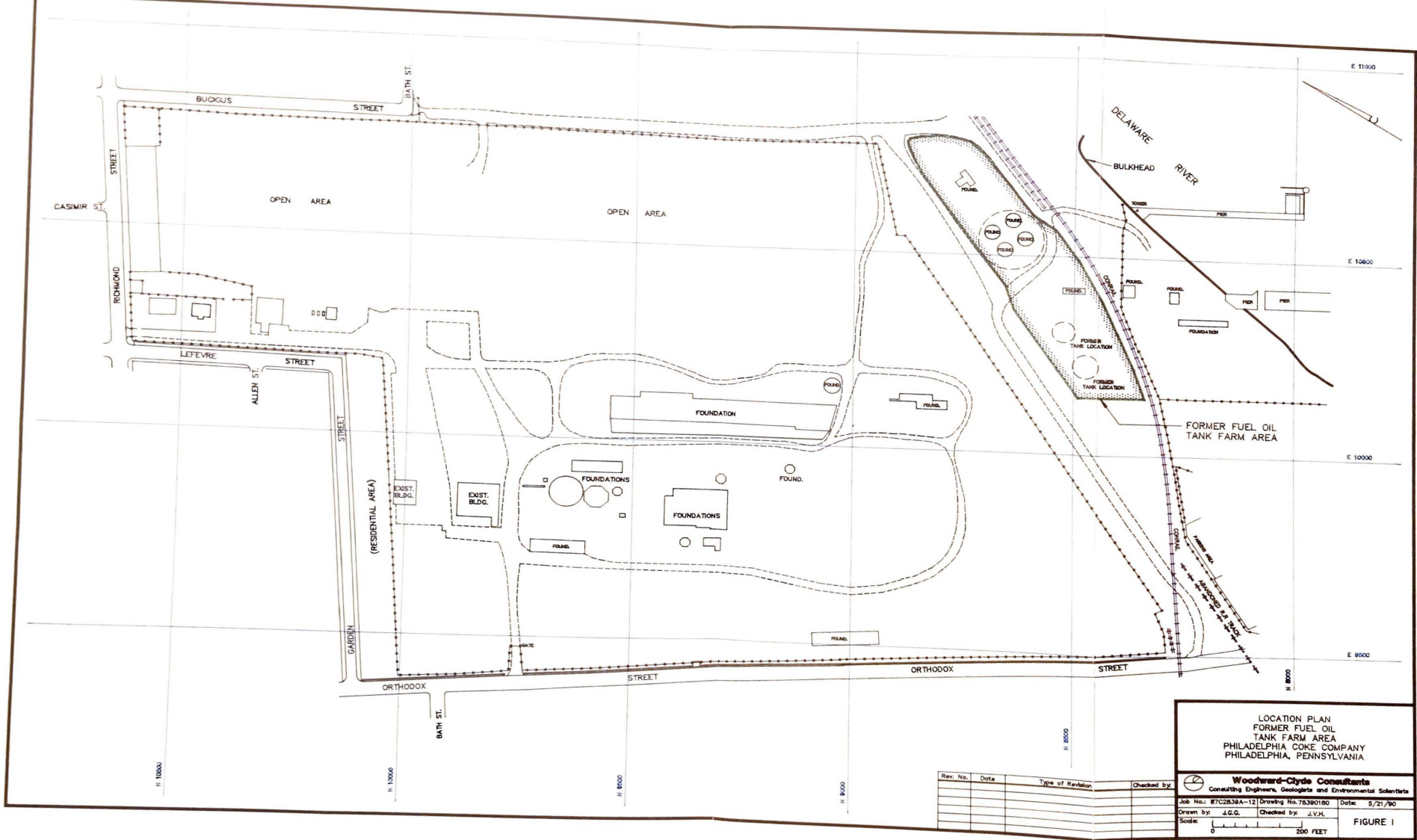
FIGURE 4  
 FACILITY LAYOUT, SOUTH AREA  
 PHILADELPHIA COKE COMPANY  
 4501 RICHMOND STREET  
 PHILADELPHIA, PENNSYLVANIA 19137

SCALE: NOT TO SCALE  
 S.O. NO.: 120686  
 DSN/DWN: MM/RRR

DATE: NOVEMBER 2011  
 FILE: 120686-PCC-06  
 CHK: SRF

**Baker**  
 Michael Baker Jr., Inc.

MICHAEL BAKER JR., INC.  
 MOON TOWNSHIP, PENNSYLVANIA



LOCATION PLAN  
 FORMER FUEL OIL  
 TANK FARM AREA  
 PHILADELPHIA COKE COMPANY  
 PHILADELPHIA, PENNSYLVANIA

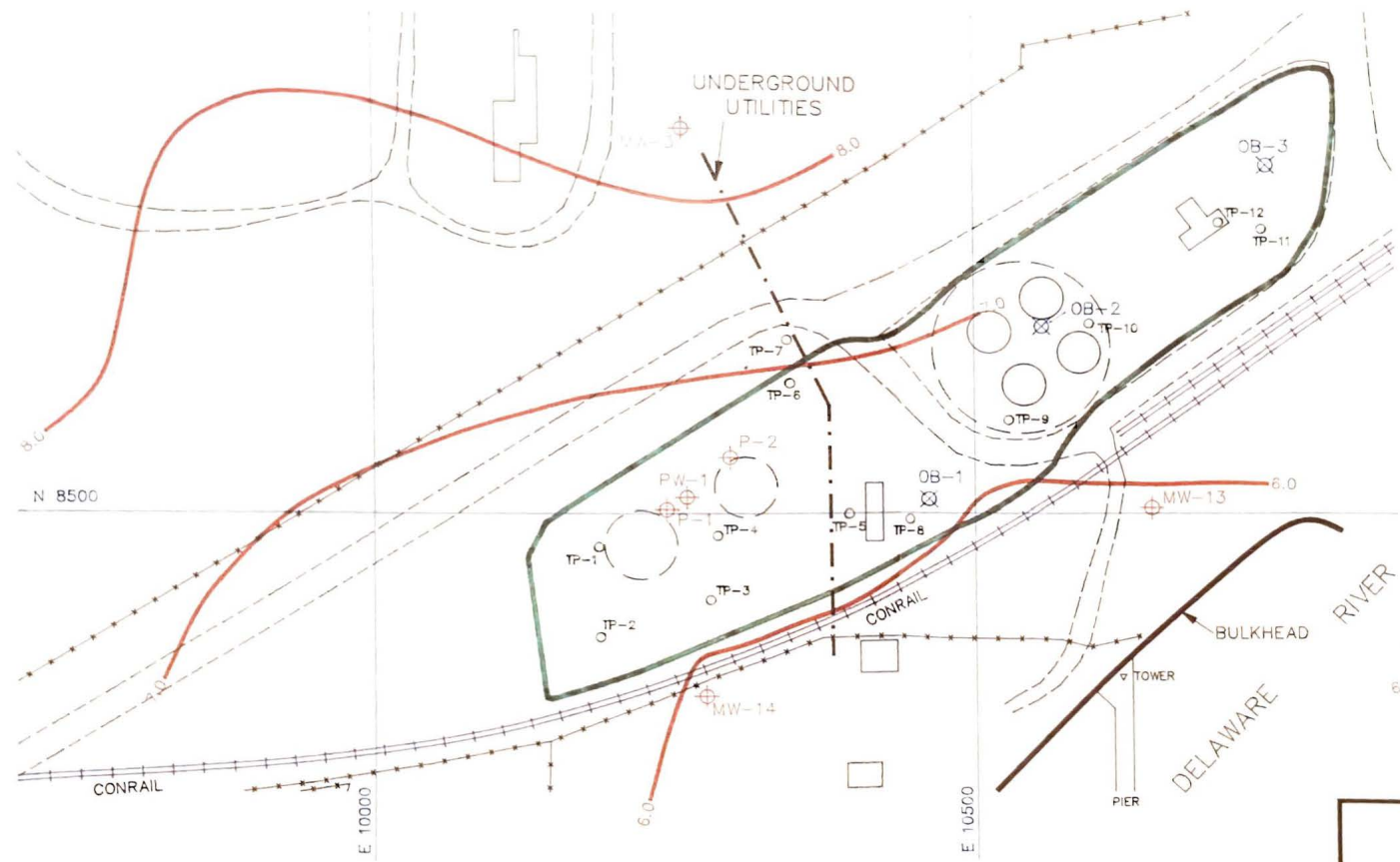
**Woodward-Clyde Consultants**  
 Consulting Engineers, Geologists and Environmental Scientists

Job No.: 87C2830A-12	Drawing No. 78390180	Date: 5/21/90
Drawn by: J.G.G.	Checked by: J.V.H.	
Code:		


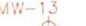

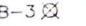

0 200 FEET

**FIGURE I**

Rev. No.	Date	Type of Revision	Checked by:



**LEGEND:**

-  FORMER FUEL OIL TANK FARM AREA (LIMIT OF SURFACE TREATMENT)
-  WELLS / PIEZOMETERS
-  TEST PITS
-  BORINGS
-  WATER TABLE ELEVATION CONTOURS (1' INTERVAL; FT, MSLD) - FIRST QUARTER, 1990

DETAIL  
 FORMER FUEL OIL TANK FARM AREA  
 PHILADELPHIA COKE COMPANY  
 PHILADELPHIA, PENNSYLVANIA

 **Woodward-Clyde Consultants**  
 Consulting Engineers, Geologists and Environmental Scientists

Job No.: 87C2839A-12    Drawing No. 78390190    Date: 5/23/90

Drawn by: J.G.G.    Checked by: J.V.H.

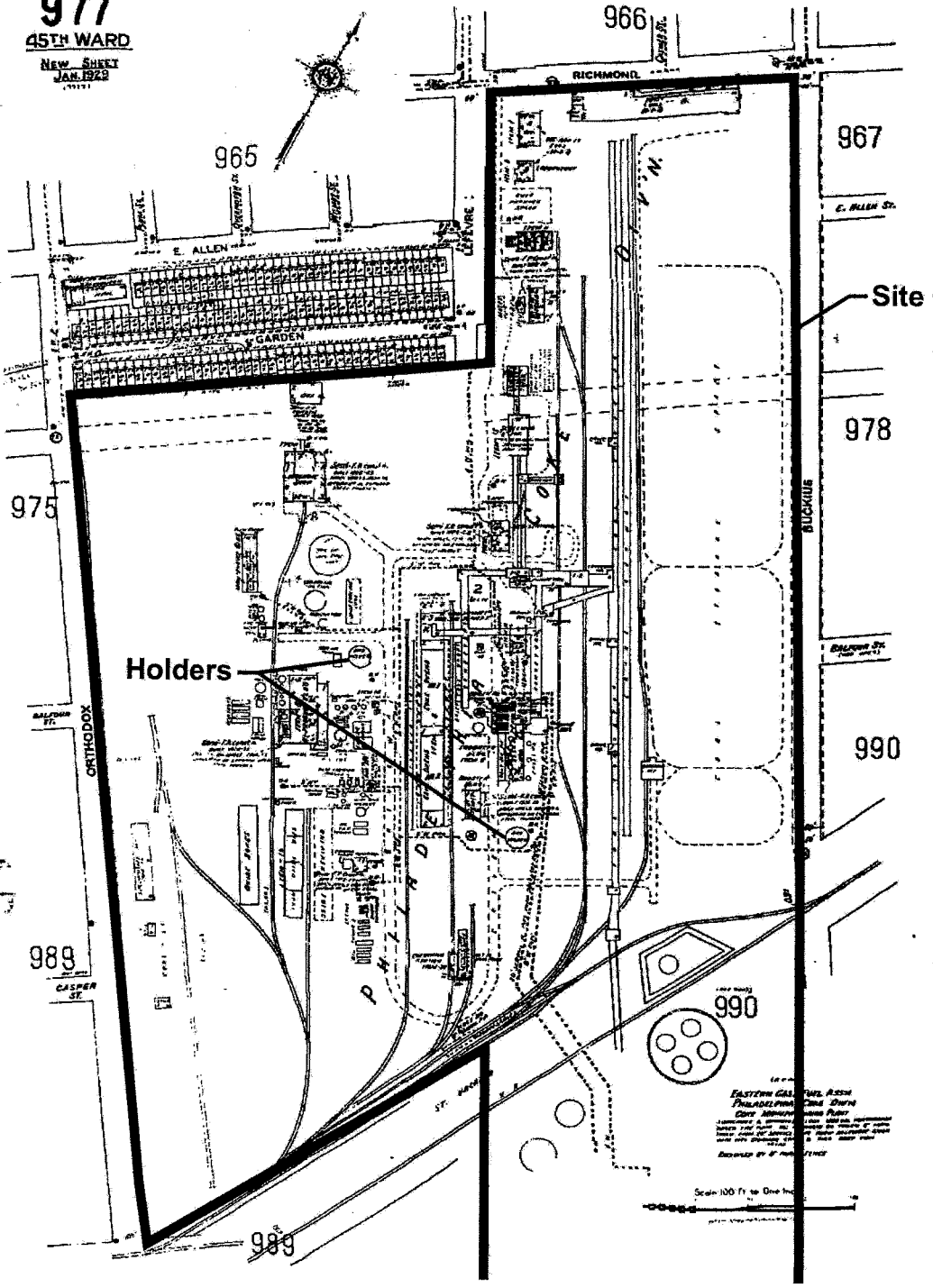
Scale:  0 100 FEET

FIGURE 2

Rev. No.	Date	Type of Revision	Checked by:



PHILADELPHIA  
**977**  
 45TH WARD  
 NEW SHEET  
 JAN. 1893  
 1913



KeySpan Corporation  
 Brooklyn, New York

Former Coke Works  
 Philadelphia, Pennsylvania

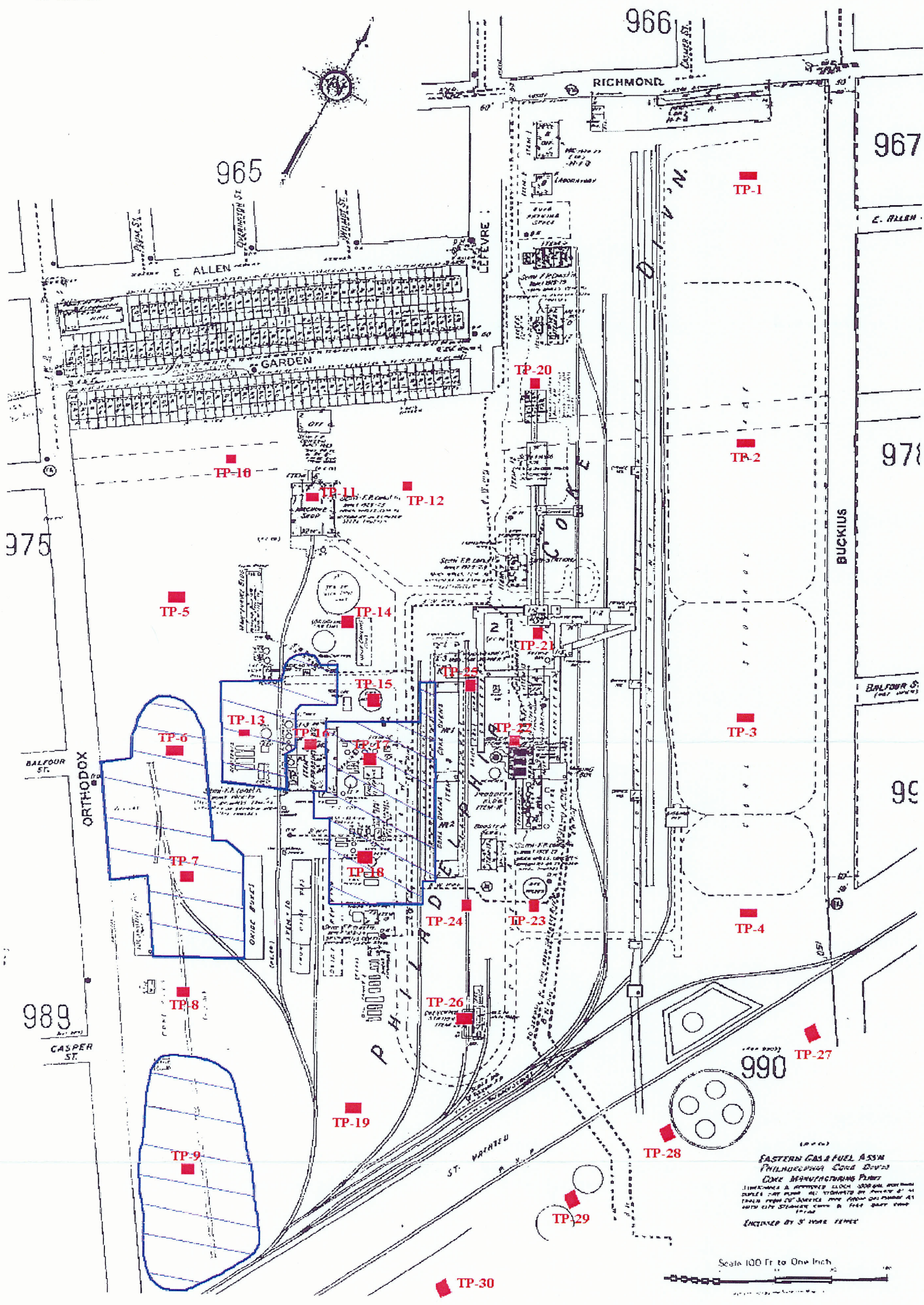
PHILADELPHIA  
 1951 SANBORN  
 FIRE INSURANCE MAP



GEI Consultants, Inc.

Project 99447

August 2003



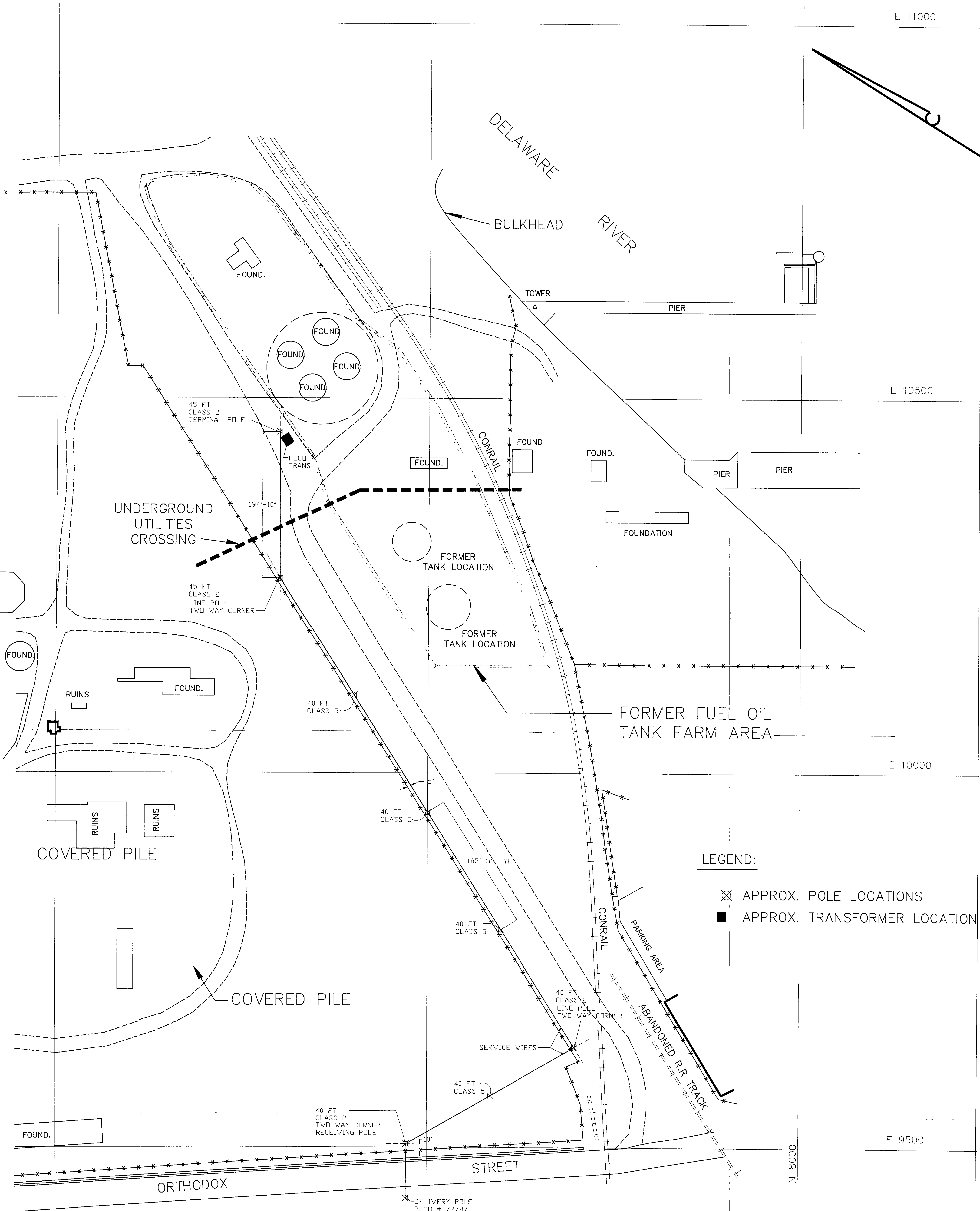
SOURCE:  
Sanborn Library, LLC., 1969

- Proposed Test Pit Locations
- Former Excavated Sites

### PROPOSED SOIL SAMPLING LOCATIONS FORMER PHILADELPHIA COKE SITE PHILADELPHIA, PENNSYLVANIA

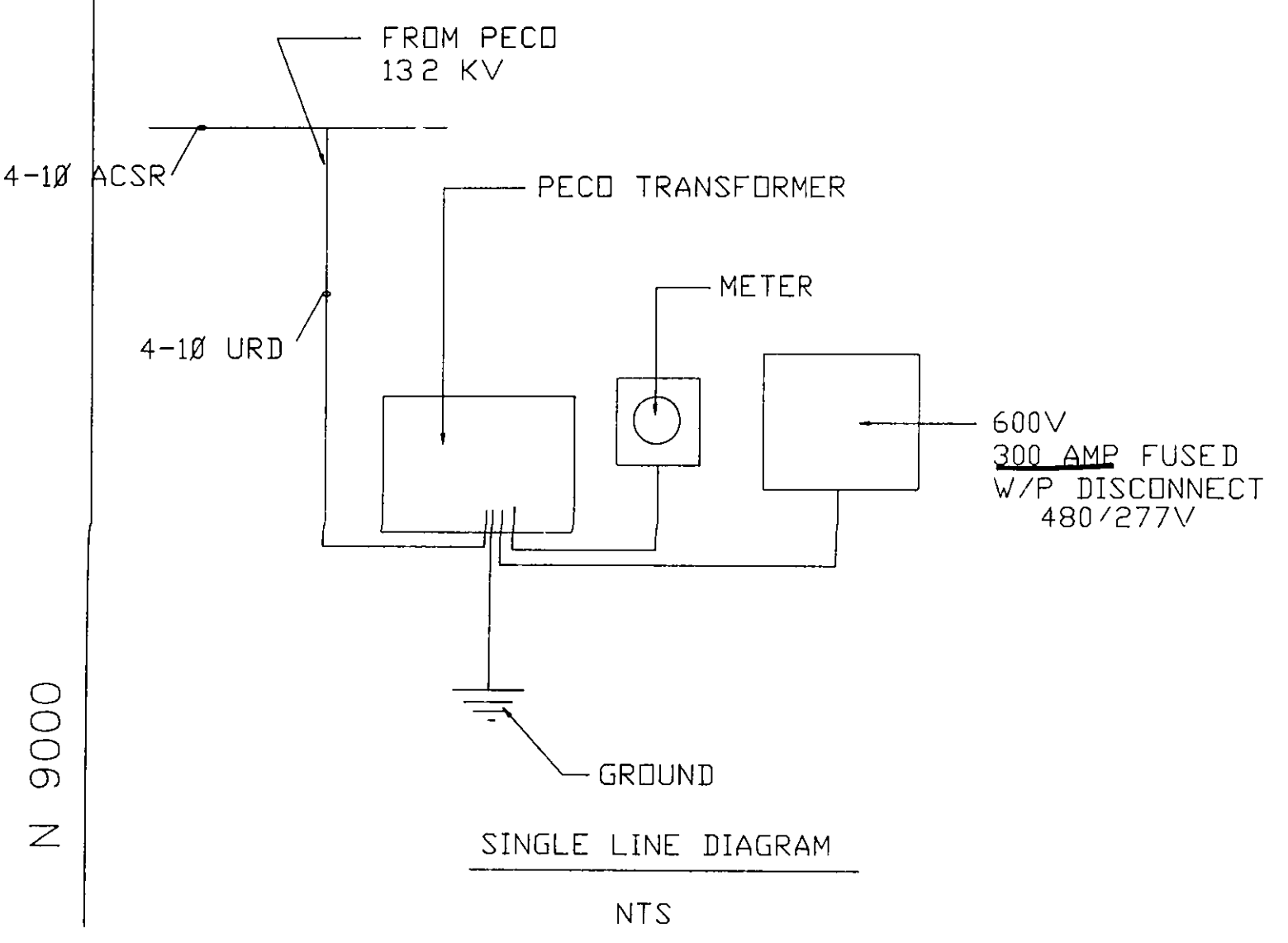
**PAULUS SOKOLOWSKI & SARTOR, LLC**  
consulting engineers and environmental planners  
A Keyspan Business Solution  
Warren (Somerset County), NJ

Dwn By: ECS	Scale: 1" = 100' APPROX	Project No. 9002-559-04
CK'd By: JB	Date: APRIL 15, 2003	Fig. No.: 1



LEGEND:

- ⊗ APPROX. POLE LOCATIONS
- APPROX. TRANSFORMER LOCATION



NOTE:  
WORK TO BE PERFORMED  
IN ACCORDANCE WITH ALL  
PHILA. ELEC. CO., CITY OF PHILA.  
& NEC 1990 EDITION.

<b>HARRY F. ORTLIP CO.</b> ELECTRICAL CONSTRUCTION 780 LANCASTER AVE. BRYN MAWR, PA. 19010		
PHILADELPHIA COKE COMPANY PHILADELPHIA, PENNSYLVANIA		
ELECTRICAL SERVICE FORMER TANK-FARM AREA		
SCALE 1"=1'-0"	JOB. NO. 5804	DATE 6-13-91
DRAWN LC	DRAWING NUMBER 5804-E1	
CHECKED		

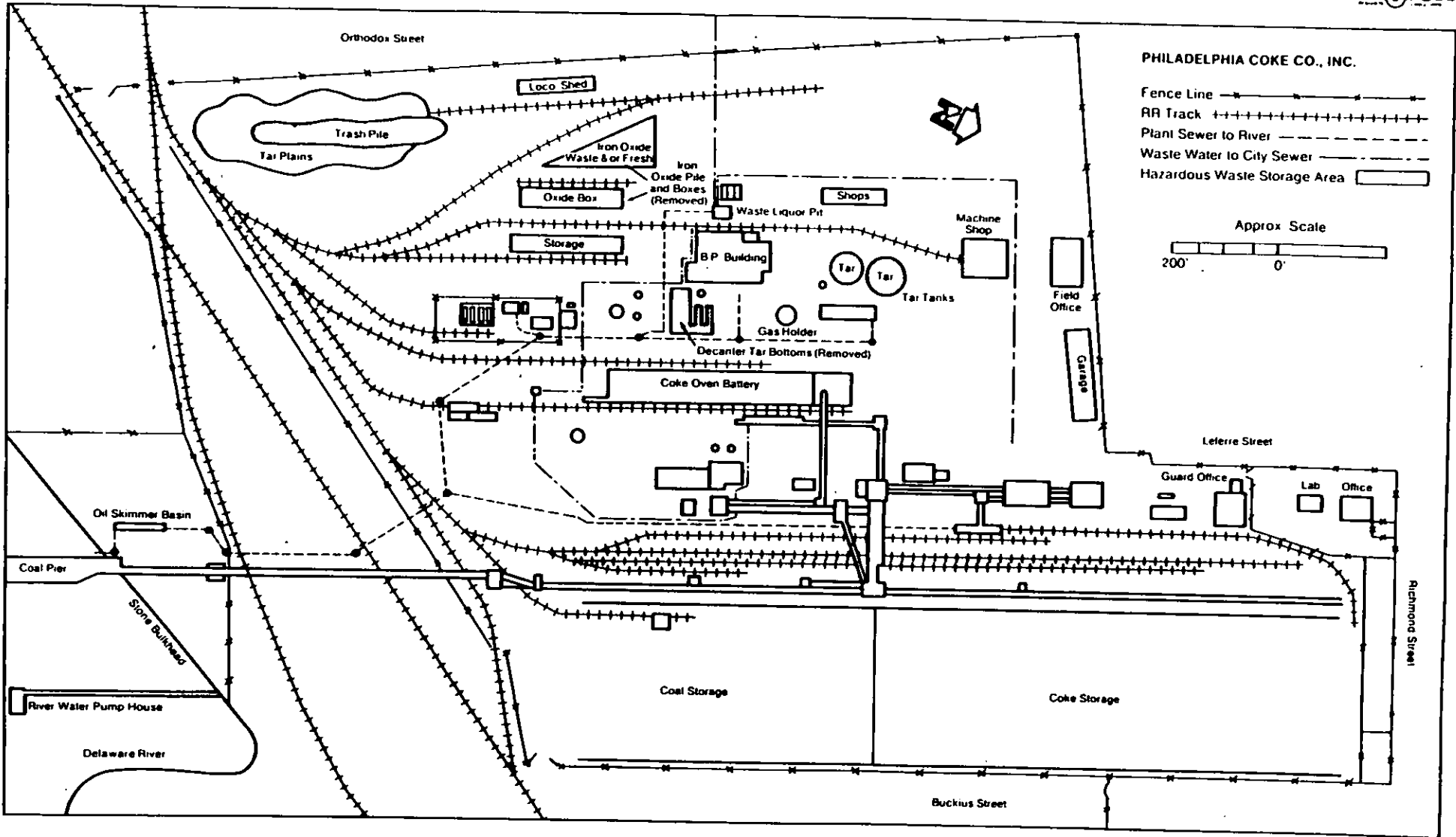
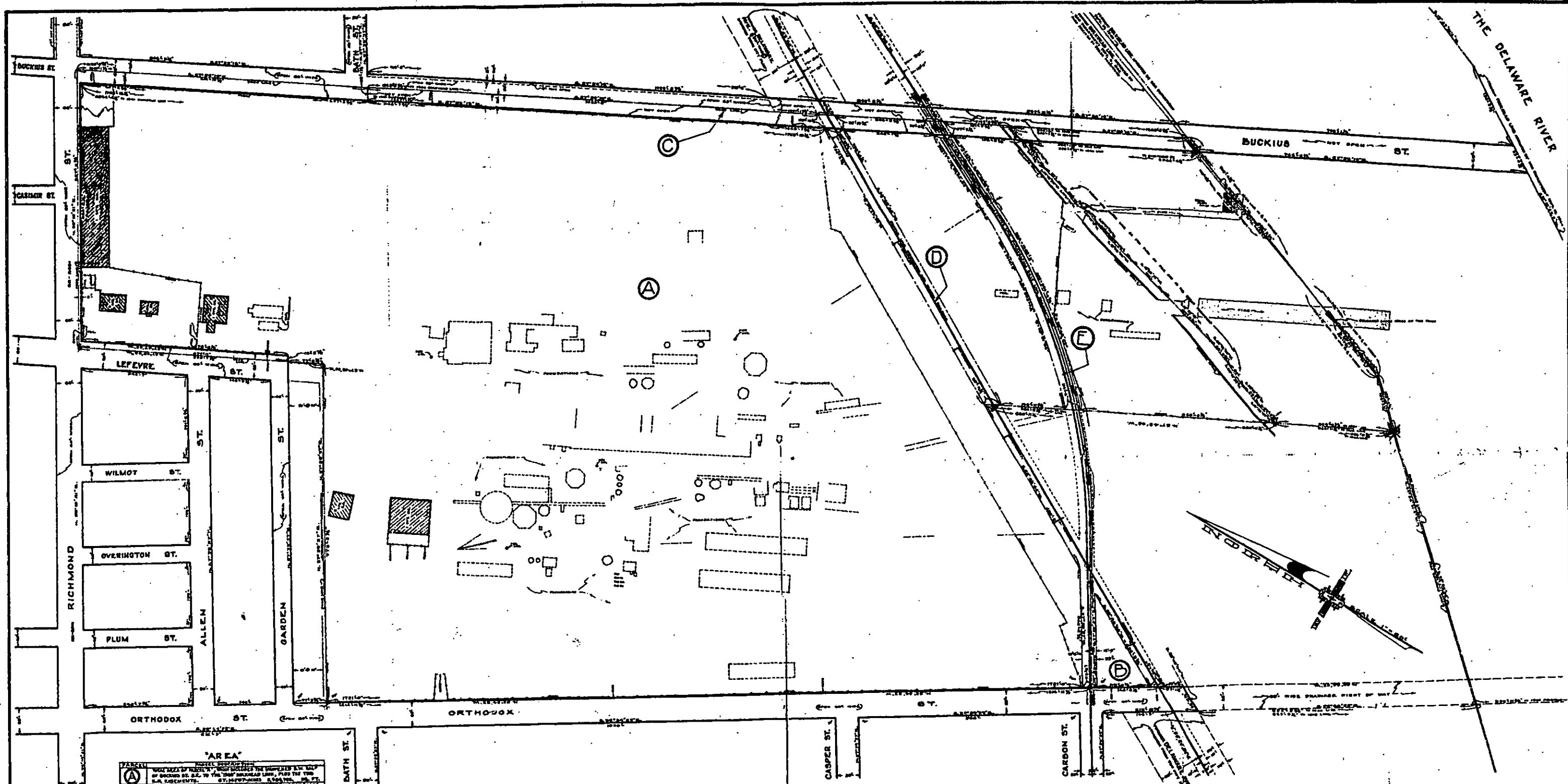


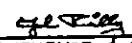
FIGURE 2-1 SITE MAP  
PHILADELPHIA COKE COMPANY

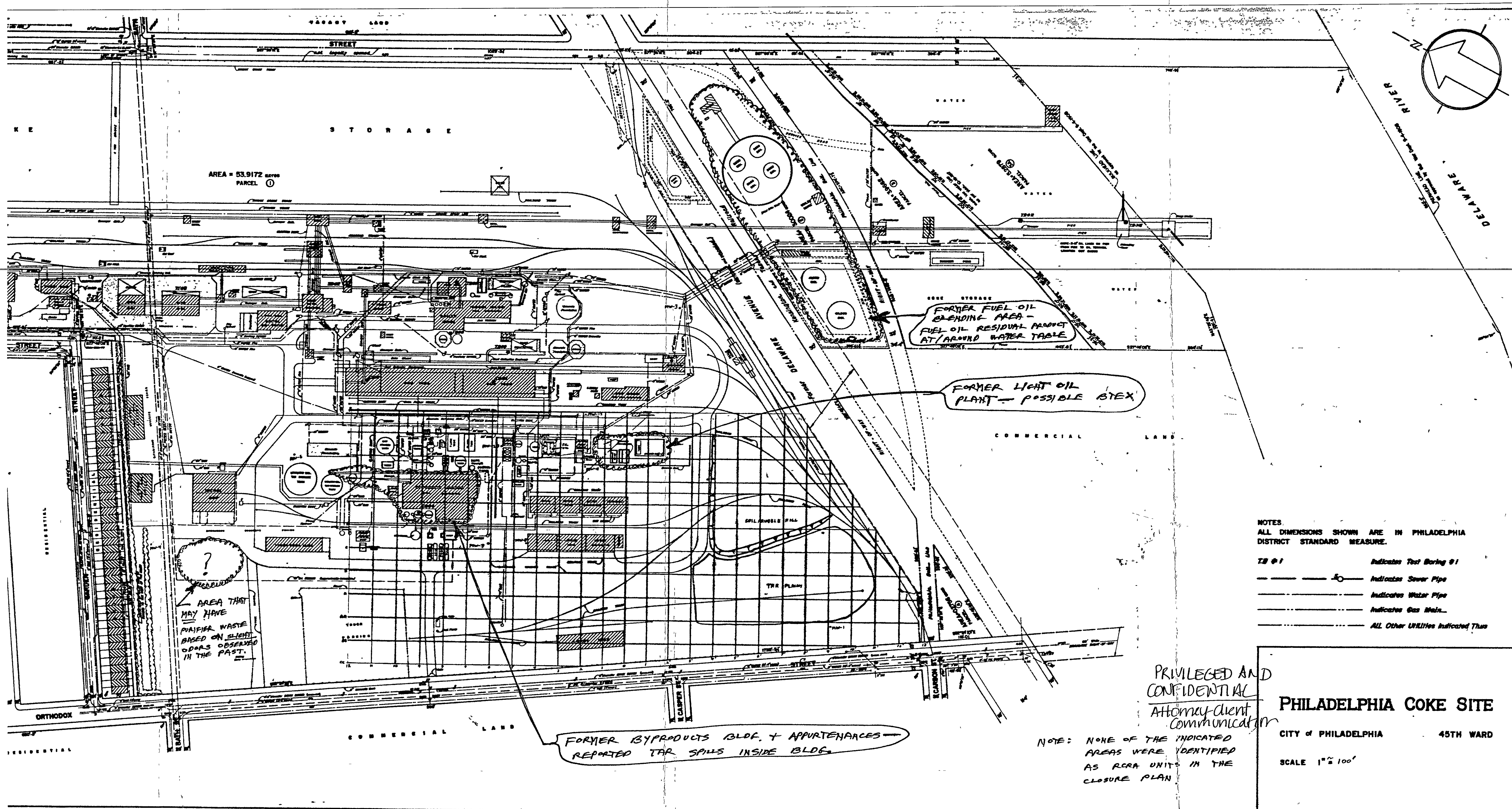


"AREA"	
(A)	AREA OF THE PROPERTY WHICH INCLUDES THE IMPROVED L&M MAP OF BUCKIUS ST. S.E. TO THE "DIP" BULKHEAD LINE, PLUS THE TWO L&M CORRECTIONS. ST. APPROXIMATELY 1,800 SQ. FT. THROUGH TRAIL AT INTERSECTION BY MEANS OF THE TWO BULKHEADS.
(B)	AREA OF THE PROPERTY S.E. OF BUCKIUS ST. TO THE "DIP" BULKHEAD LINE.
(C)	AREA OF BUCKIUS BULKHEADS EXCLUDING THE AREA IN THE S.E. OF THE S.W. HALF OF BUCKIUS ST.
(D)	AREA OF BUCKIUS BULKHEADS EXCLUDING THE AREA IN THE S.E. OF THE S.W. HALF OF BUCKIUS ST.
(E)	AREA OF BUCKIUS BULKHEADS EXCLUDING THE AREA IN THE S.E. OF THE S.W. HALF OF BUCKIUS ST.
(AB)	TOTAL = 67,485.71 - ACRES = 2,926,751.00 - SQ. FT.

SURVEY AND PLAN OF PROPERTY  
 MADE FOR  
**PCC LAND COMPANY, INC.**  
FORTY-FIFTH WARD  
 PHILADELPHIA, PENNA.

NOTE: ATTENTION IS CALLED TO THE TECHNICAL REQUIREMENTS IN THE PHILA. CODE AS AMENDED. PLAN MADE AS PER INSTRUCTIONS OF PATRICK J. GREEN, OF JACKSON-CROOK CO., DEALER'S. ATTENTION IS CALLED TO THE RESTRICTIONS, EASEMENTS, RIGHTS-OF-WAY AND OTHER PERTINENT INFORMATION AS MENTIONED IN DEEDS OF RECORD.

  
**SURVEYOR & REGULATOR**  
 EIGHTH SURVEY DISTRICT  
 AUGUST 19 1924



AREA = 53,9172 SQ FT  
PARCEL ①

FORMER FUEL OIL BLENDING AREA - FUEL OIL RESIDUAL PRODUCT AT/AROUND WATER TABLE

FORMER LIGHT OIL PLANT - POSSIBLE STEEL

AREA THAT MAY HAVE PAVED WASTE BASED ON SLIGHT ODDS OBSERVED IN THE PAST.

FORMER BYPRODUCTS BLDG. + APPURTENANCES - REPORTED TAR SPILLS INSIDE BLDG.

NOTES:  
ALL DIMENSIONS SHOWN ARE IN PHILADELPHIA DISTRICT STANDARD MEASURE.

- TS #1                      Indicates Test Boring #1
- Indicates Sewer Pipe
- — —                      Indicates Water Pipe
- · — · —                      Indicates Gas Main
- — — — —                      All Other Utilities Indicated Thus

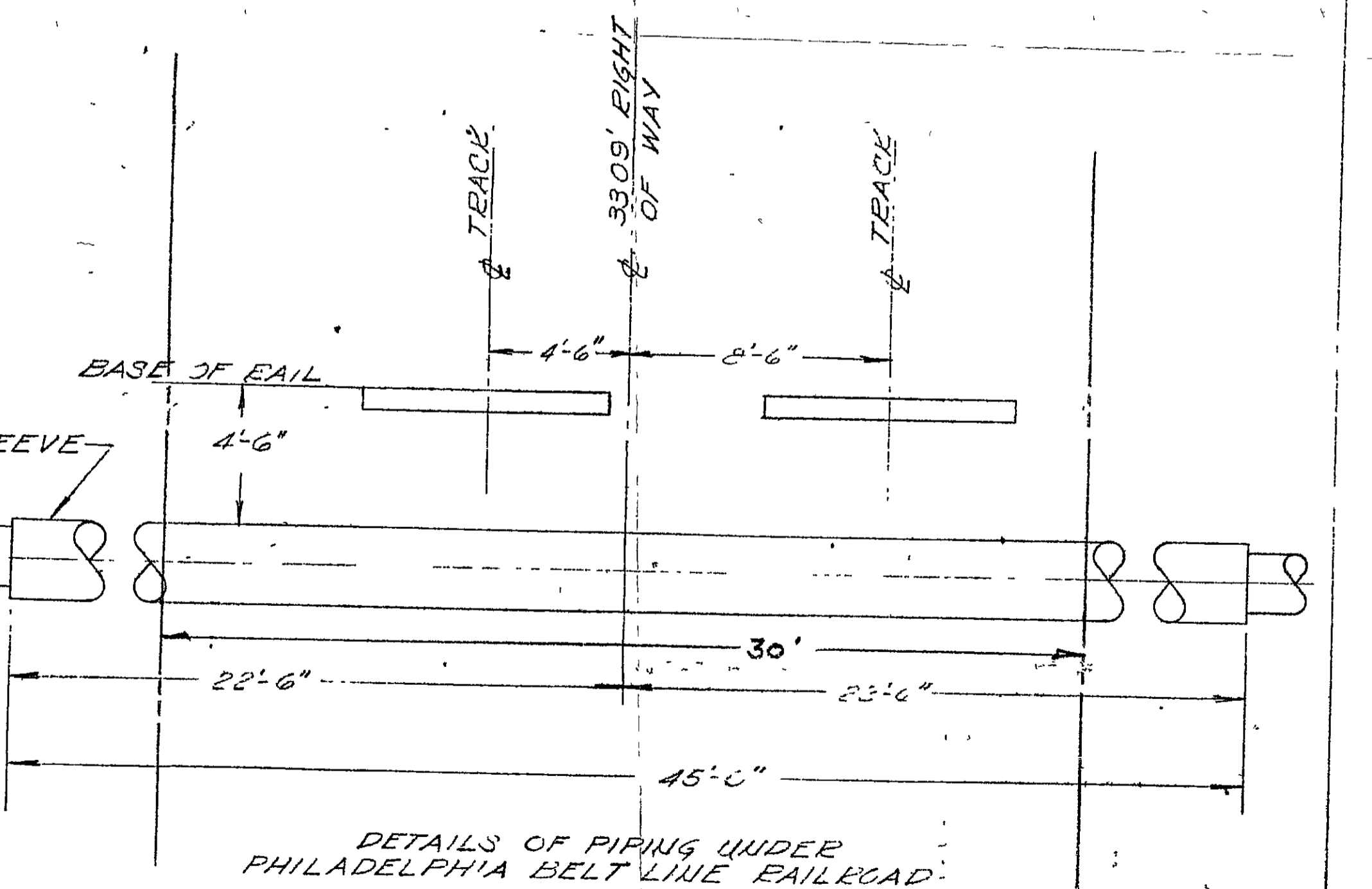
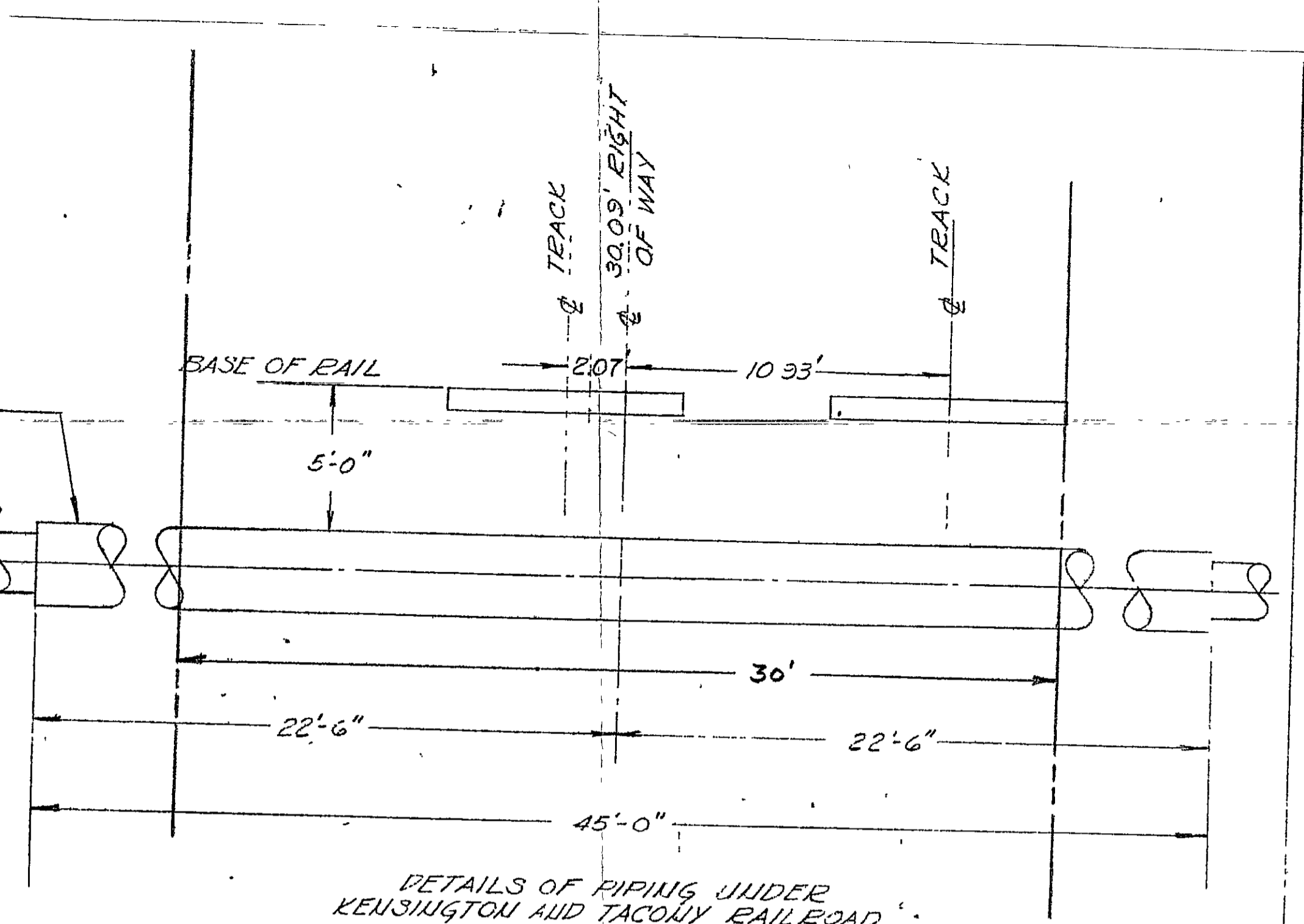
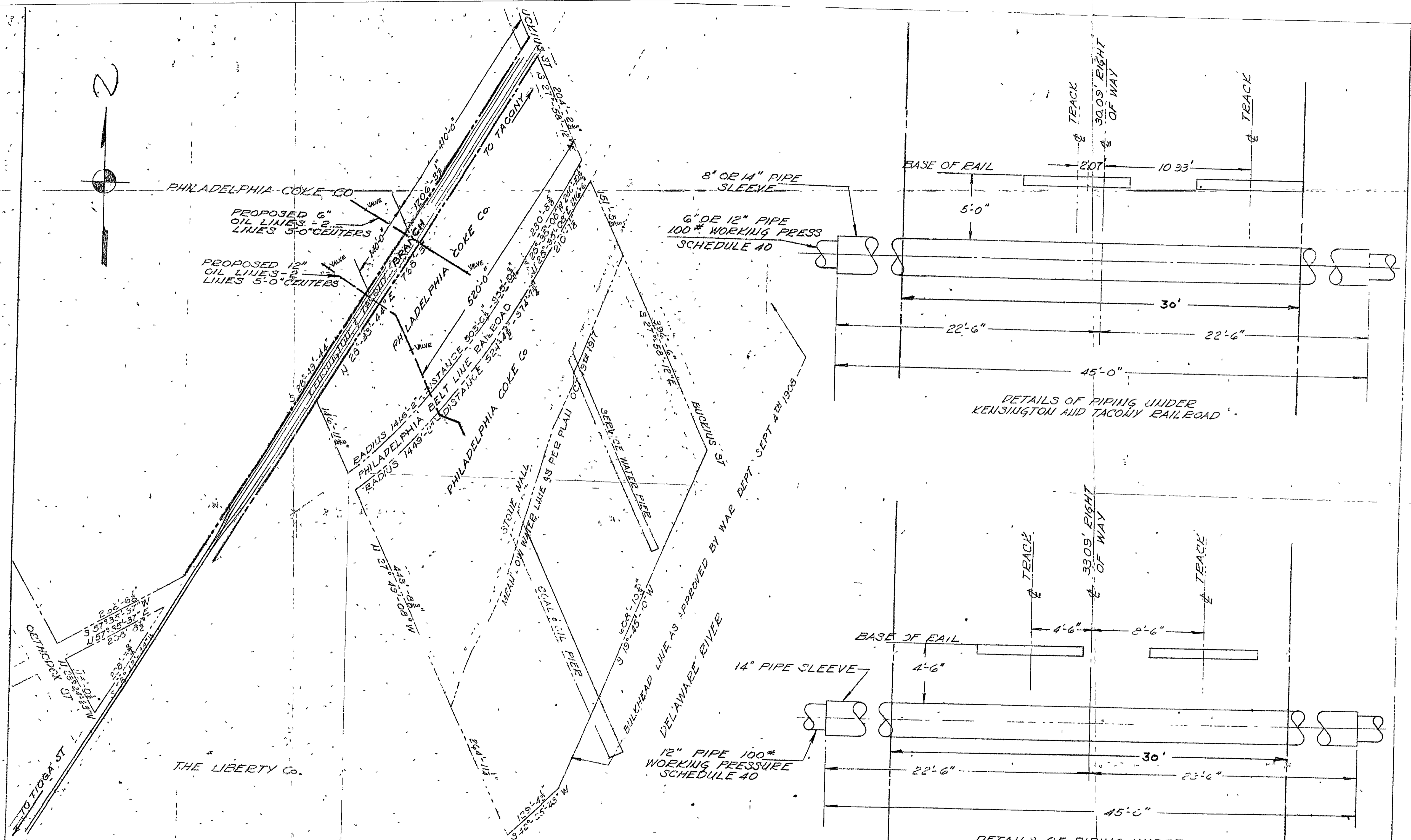
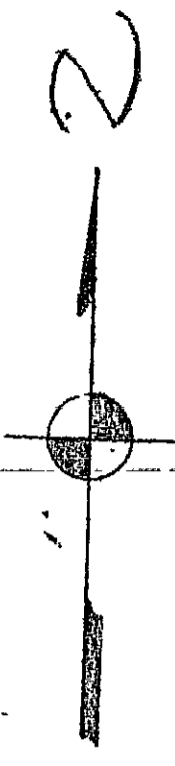
PRIVILEGED AND CONFIDENTIAL  
Attorney-client communication

NOTE: NONE OF THE INDICATED AREAS WERE IDENTIFIED AS RCRA UNITS IN THE CLOSURE PLAN

**PHILADELPHIA COKE SITE**

CITY OF PHILADELPHIA      45TH WARD

SCALE 1" = 100'



PROPERTY MAP	
REFERENCES	1705AW
P-22-F	DWG NO.

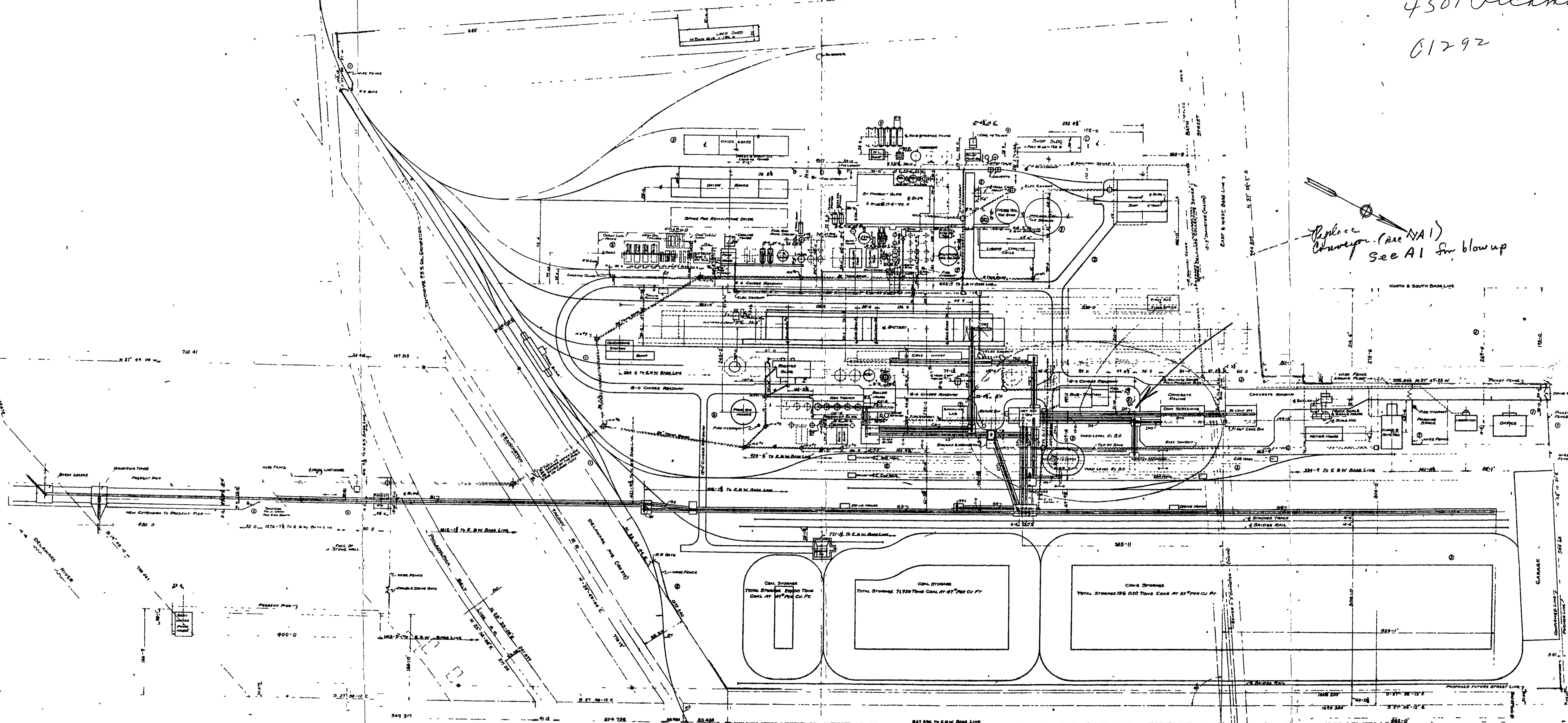
NO OF PIPES	NO OF VALVES	NO OF FITTINGS	NO OF JOINTS
NO OF APPROVALS	DATE	APPROVED	

PHILADELPHIA COKE CO.  
4301 RICHMOND STREET  
PHILADELPHIA, PA.

PROPERTY MAP  
SHOWING OIL LINES  
INTERSECTING RR  
SCALE 1/4" = 1 FOOT  
B286

4501 Richmond  
01292

Replace  
Conveyer (see NAI)  
See A1 for blow up



THIS DWG. SUPERSEDES DWG. # 78536

	THE KOPPERS CONSTRUCTION COMPANY PHILADELPHIA CORE CO. BOILER & GAS PRODUCER PLANTS - GENL. ARRY	80007
	DRAWN BY: [Signature] CHECKED BY: [Signature] DATE: [Date]	

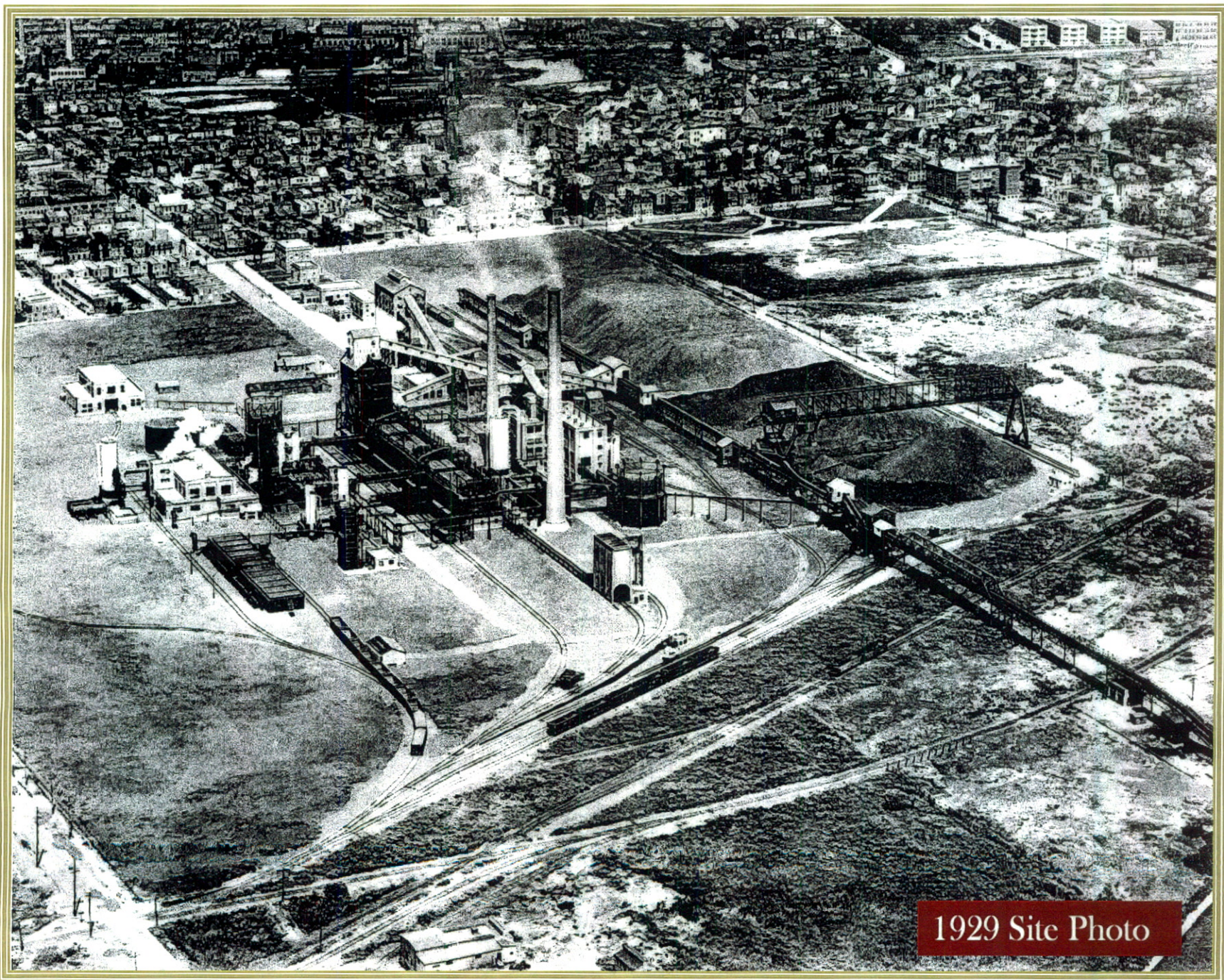


**DRAFT**  
**Location and Description of Encountered Piping**  
**Former Philadelphia Coke Plant Site**  
**Philadelphia, Pennsylvania**

Test Pit ID	Location	Depth of Piping	Piping Description	Piping Contents
PCTP - 02	Area of Laboratory	6.5'	8" Cast Iron	Trickling Water
PCTP - 09	Machine Shop	~ 6'	2 - 8"	Unknown
PCTP - 10	Machine Shop	5'	2" Metal	Unknown
PCTP - 12A/B	Operations Area at Holders	3'	8" to 30" Cast Iron	Tar
PCTP - 16	Operations Area at By-Products Building	4'	12" Corrugated	Unknown
PCTP - 20	Operations Area at By-Products Building	6'	12" Cast Iron	Unknown
PCTP - 21	Operations Area North of Coke Ovens	2.5'	3" Cast Iron	Tar or Heavy Oil
PCTP - 25	Operations Area at By-Products Building	~8'	2 vertical 6" Cast Iron	Unknown
PCTP - 26	Operations Area at Coke Ovens	4'	2 - 8" Schedule 80 PVC	Tar or Heavy Oil
PCTP - 30	Operations Area at By-Products Building	6'	12" Ductile	Unknown
PCTP - 33	Operations Area at By-Products Building	5'	12" Terra Cotta	Unknown
PCTP - 35	Operations Area near Coal Conveyor	8' ---> 9'	12" Concrete	Water
PCTP - 37	Operations Area at Stack	4'	2 - 4" Ductile	Unknown
PCTP - 41	East of Operations Area	6'	6" Cast Iron	Empty, trickling water
PCTP - 45	North of Former Iron Oxide Boxes	0' - 4'	1" - 4" loose pipes	Unknown
PCTP - 47	East of Operations Area	9'	12" Concrete	Unknown
PCTP - 50	Western Border of Site at Orthodox Street	2'	6" Cast Iron	Unknown
PCTP - 59	Fuel Blending Area	2'	12" Cast Iron	Unknown
	Fuel Blending Area	6'	4" Terra Cotta	Empty, trickling water
PCSB - 15A	Operations Area at By-Products Building	6'	2" PVC	Unknown
TP - 17	West of Former Iron Oxide Boxes	2' - 4'	6" - 8" and 2" Cast Iron	Unknown
TP - 23	Fuel Blending Area	2' - 3'	3/4" - 2" PVC	Unknown
TP - 30	Operations Area West of Holders	30"	Concrete	Unknown
TP - 35	Operations Area at By-Products Building	2'	3" Metal, loose	Unknown
TP - 42A	Operations Area at Coke Ovens	1' - 5'	3 - 2" Steel	Empty
TP - 44	Fuel Blending Area	3' - 5'	3" PVC Schedule 40	Unknown
TP - 68	Operations Area at Coke Ovens	3'	12" Cast Iron	Tar or Heavy Oil
TP - 70	Operations Area East of Holders	3'	2 - 12" Cast Iron	Unknown
	Operations Area East of Holders	3'	8" Cast Iron	Water
TP - 72	East of Machine Shop	0' - 2'	18" Concrete	Unknown
TP - 75	Fuel Blending Area	3' - 7'	3" PVC in gravel bed	Unknown

**Notes:**

Unknown- Indicates that it is not known whether or not material is present within the piping, and, if material is within the piping what the material is.



1929 Site Photo