

Philadelphia Coke Company

4501 Richmond St.

Philadelphia, PA 19137

Inquiry Number: 4832855.3

January 23, 2017

## Certified Sanborn® Map Report



6 Armstrong Road, 4th floor  
Shelton, CT 06484  
Toll Free: 800.352.0050  
[www.edrnet.com](http://www.edrnet.com)

# Certified Sanborn® Map Report

01/23/17

**Site Name:**

Philadelphia Coke Company  
4501 Richmond St.  
Philadelphia, PA 19137  
EDR Inquiry # 4832855.3

**Client Name:**

ARCADIS U.S., Inc.  
P.O. Box 66  
Syracuse, NY 13214  
Contact: Fred Lont



The Sanborn Library has been searched by EDR and maps covering the target property location as provided by ARCADIS U.S., Inc. were identified for the years listed below. The Sanborn Library is the largest, most complete collection of fire insurance maps. The collection includes maps from Sanborn, Bromley, Perris & Browne, Hopkins, Barlow, and others. Only Environmental Data Resources Inc. (EDR) is authorized to grant rights for commercial reproduction of maps by the Sanborn Library LLC, the copyright holder for the collection. Results can be authenticated by visiting [www.edrnet.com/sanborn](http://www.edrnet.com/sanborn).

The Sanborn Library is continually enhanced with newly identified map archives. This report accesses all maps in the collection as of the day this report was generated.

## Certified Sanborn Results:

**Certification #** 4BC2-494E-A471  
**PO #** B0036790.0000.00001  
**Project** B0036790.0000.00001

**Maps Provided:**

2006	1951
2004	1920
2002	
2000	
1989	
1980	
1975	
1969	



Sanborn® Library search results

Certification #: 4BC2-494E-A471

The Sanborn Library includes more than 1.2 million fire insurance maps from Sanborn, Bromley, Perris & Browne, Hopkins, Barlow and others which track historical property usage in approximately 12,000 American cities and towns. Collections searched:

- Library of Congress
- University Publications of America
- EDR Private Collection

*The Sanborn Library LLC Since 1866™*

## Limited Permission To Make Copies

ARCADIS U.S., Inc. (the client) is permitted to make up to FIVE photocopies of this Sanborn Map transmittal and each fire insurance map accompanying this report solely for the limited use of its customer. No one other than the client is authorized to make copies. Upon request made directly to an EDR Account Executive, the client may be permitted to make a limited number of additional photocopies. This permission is conditioned upon compliance by the client, its customer and their agents with EDR's copyright policy; a copy of which is available upon request.

### Disclaimer - Copyright and Trademark Notice

This Report contains certain information obtained from a variety of public and other sources reasonably available to Environmental Data Resources, Inc. It cannot be concluded from this Report that coverage information for the target and surrounding properties does not exist from other sources. NO WARRANTY EXPRESSED OR IMPLIED, IS MADE WHATSOEVER IN CONNECTION WITH THIS REPORT. ENVIRONMENTAL DATA RESOURCES, INC. SPECIFICALLY DISCLAIMS THE MAKING OF ANY SUCH WARRANTIES, INCLUDING WITHOUT LIMITATION, MERCHANTABILITY OR FITNESS FOR A PARTICULAR USE OR PURPOSE. ALL RISK IS ASSUMED BY THE USER. IN NO EVENT SHALL ENVIRONMENTAL DATA RESOURCES, INC. BE LIABLE TO ANYONE, WHETHER ARISING OUT OF ERRORS OR OMISSIONS, NEGLIGENCE, ACCIDENT OR ANY OTHER CAUSE, FOR ANY LOSS OF DAMAGE, INCLUDING, WITHOUT LIMITATION, SPECIAL, INCIDENTAL, CONSEQUENTIAL, OR EXEMPLARY DAMAGES. ANY LIABILITY ON THE PART OF ENVIRONMENTAL DATA RESOURCES, INC. IS STRICTLY LIMITED TO A REFUND OF THE AMOUNT PAID FOR THIS REPORT. Purchaser accepts this Report "AS IS". Any analyses, estimates, ratings, environmental risk levels or risk codes provided in this Report are provided for illustrative purposes only, and are not intended to provide, nor should they be interpreted as providing any facts regarding, or prediction or forecast of, any environmental risk for any property. Only a Phase I Environmental Site Assessment performed by an environmental professional can provide information regarding the environmental risk for any property. Additionally, the information provided in this Report is not to be construed as legal advice.

Copyright 2017 by Environmental Data Resources, Inc. All rights reserved. Reproduction in any media or format, in whole or in part, of any report or map of Environmental Data Resources, Inc., or its affiliates, is prohibited without prior written permission.

EDR and its logos (including Sanborn and Sanborn Map) are trademarks of Environmental Data Resources, Inc. or its affiliates. All other trademarks used herein are the property of their respective owners.

## Sanborn Sheet Key

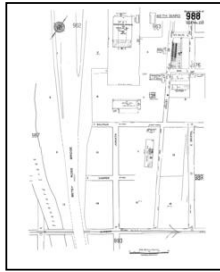
This Certified Sanborn Map Report is based upon the following Sanborn Fire Insurance map sheets.



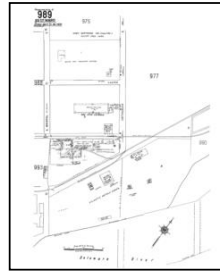
### 2006 Source Sheets



Volume 10, Sheet 975  
2006



Volume 10, Sheet 988  
2006

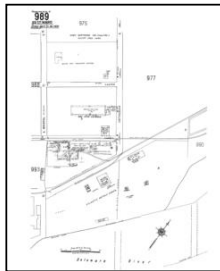


Volume 10, Sheet 989  
2006

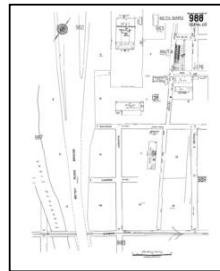
### 2004 Source Sheets



Volume 10, Sheet 975  
2004



Volume 10, Sheet 989  
2004

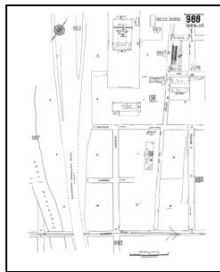


Volume 10, Sheet 988  
2004

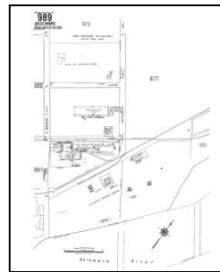
### 2002 Source Sheets



Volume 10, Sheet 975  
2002



Volume 10, Sheet 988  
2002



Volume 10, Sheet 989  
2002

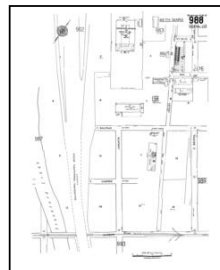
### 2000 Source Sheets



Volume 10, Sheet 975  
2000



Volume 10, Sheet 989  
2000



Volume 10, Sheet 988  
2000

## Sanborn Sheet Key

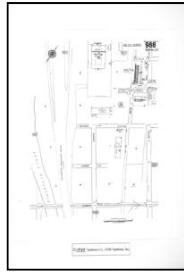
This Certified Sanborn Map Report is based upon the following Sanborn Fire Insurance map sheets.



### 1989 Source Sheets



Volume 10, Sheet 975  
1989



Volume 10, Sheet 988  
1989



Volume 10, Sheet 989  
1989

### 1980 Source Sheets



Volume 10, Sheet 975  
1980

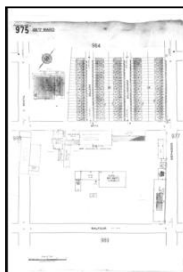


Volume 10, Sheet 988  
1980



Volume 10, Sheet 989  
1980

### 1975 Source Sheets



Volume 10, Sheet 975  
1975

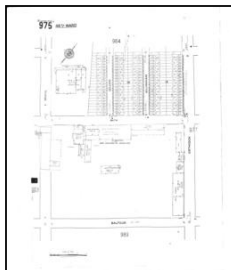


Volume 10, Sheet 988  
1975

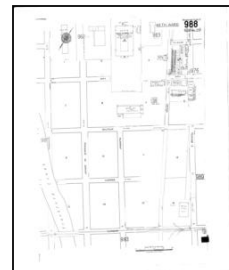


Volume 10, Sheet 989  
1975

### 1969 Source Sheets



Volume 10, Sheet 975  
1969



Volume 10, Sheet 988  
1969



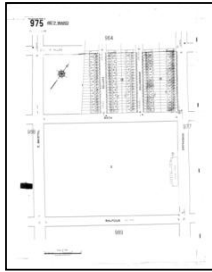
Volume 10, Sheet 989  
1969

## Sanborn Sheet Key

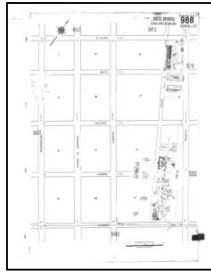
This Certified Sanborn Map Report is based upon the following Sanborn Fire Insurance map sheets.



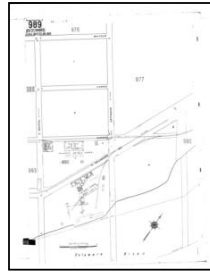
### 1951 Source Sheets



Volume 10, Sheet 975  
1951

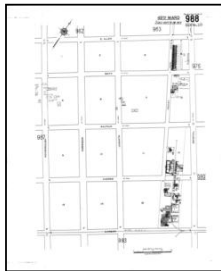


Volume 10, Sheet 988  
1951

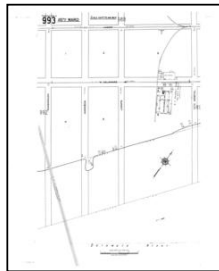


Volume 10, Sheet 989  
1951

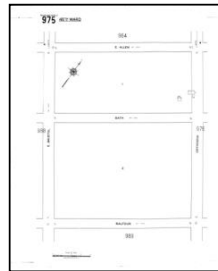
### 1920 Source Sheets



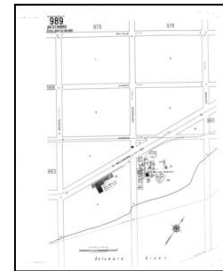
Volume 10, Sheet 988  
1920



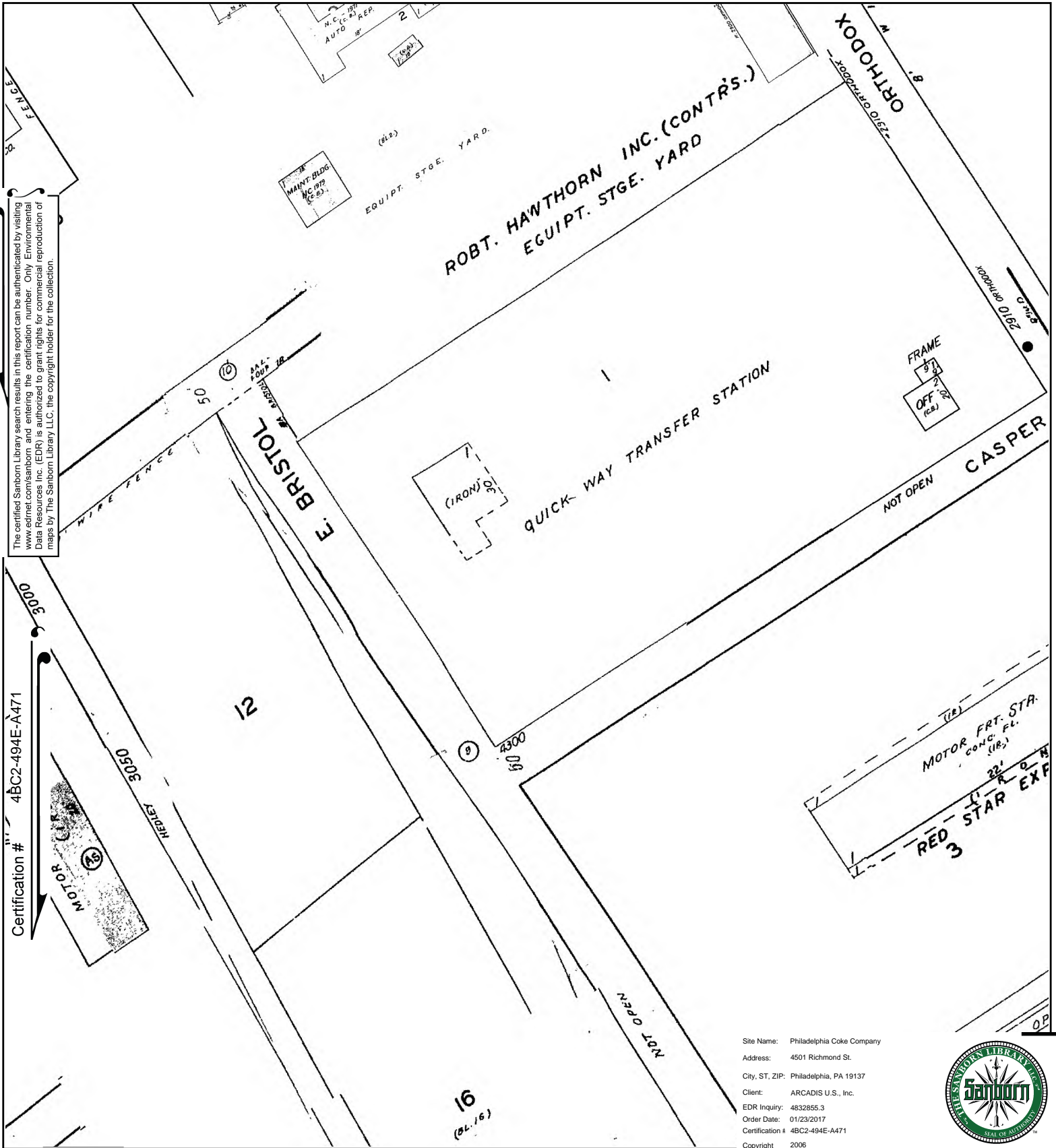
Volume 10, Sheet 993  
1920



Volume 10, Sheet 975  
1920



Volume 10, Sheet 989  
1920



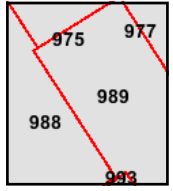
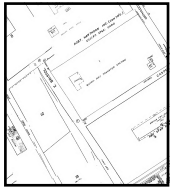
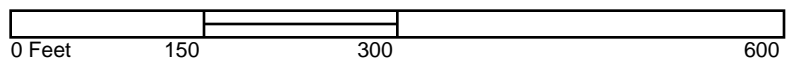
The certified Sanborn Library search results in this report can be authenticated by visiting [www.edrnet.com/sanborn](http://www.edrnet.com/sanborn) and entering the certification number. Only Environmental Data Resources Inc. (EDR) is authorized to grant rights for commercial reproduction of maps by The Sanborn Library LLC, the copyright holder for the collection.

Certification # 4BC2-494E-A471

Site Name: Philadelphia Coke Company  
 Address: 4501 Richmond St.  
 City, ST, ZIP: Philadelphia, PA 19137  
 Client: ARCADIS U.S., Inc.  
 EDR Inquiry: 4832855.3  
 Order Date: 01/23/2017  
 Certification # 4BC2-494E-A471  
 Copyright 2006



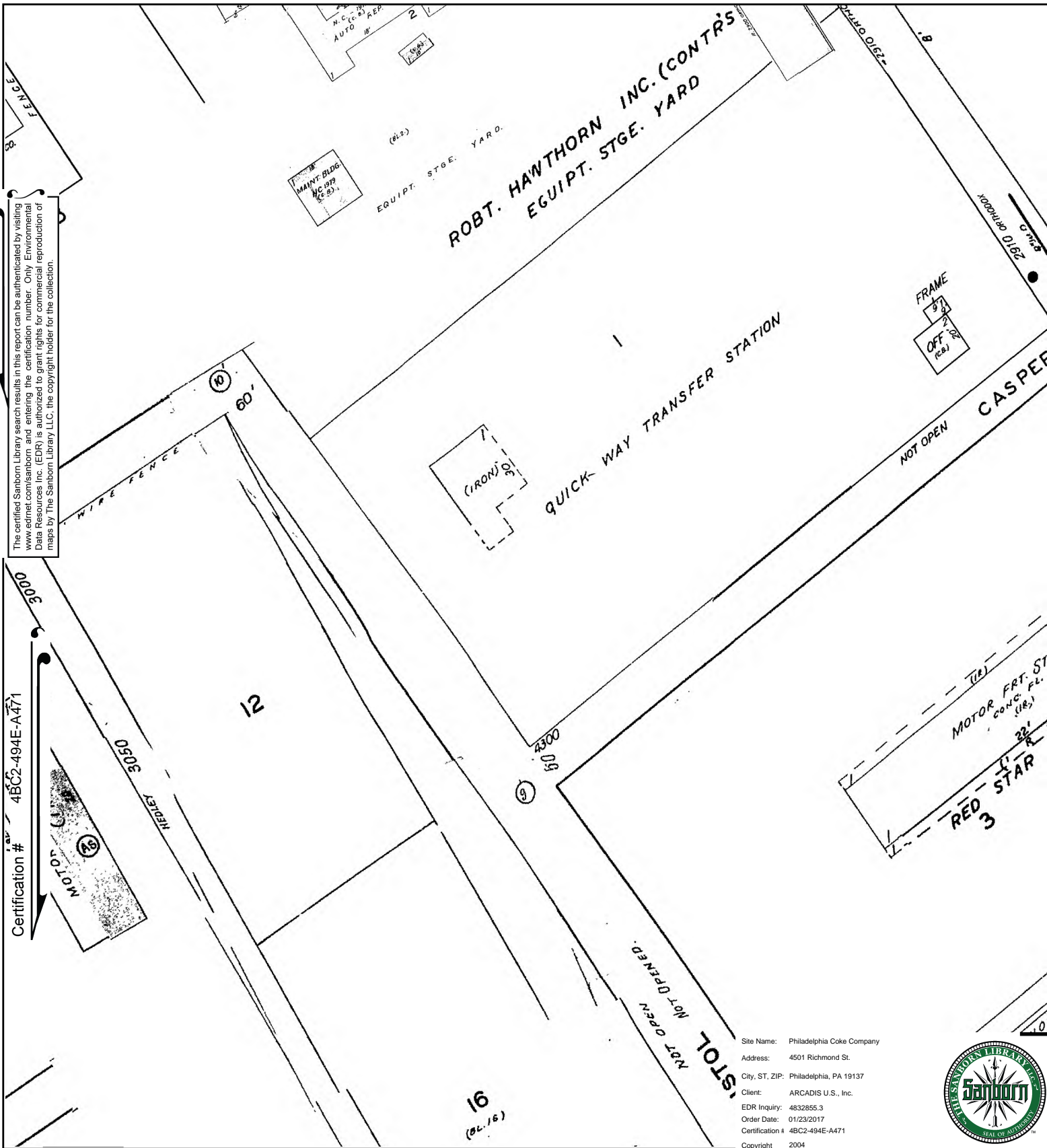
This Certified Sanborn Map combines the following sheets. Outlined areas indicate map sheets within the collection.

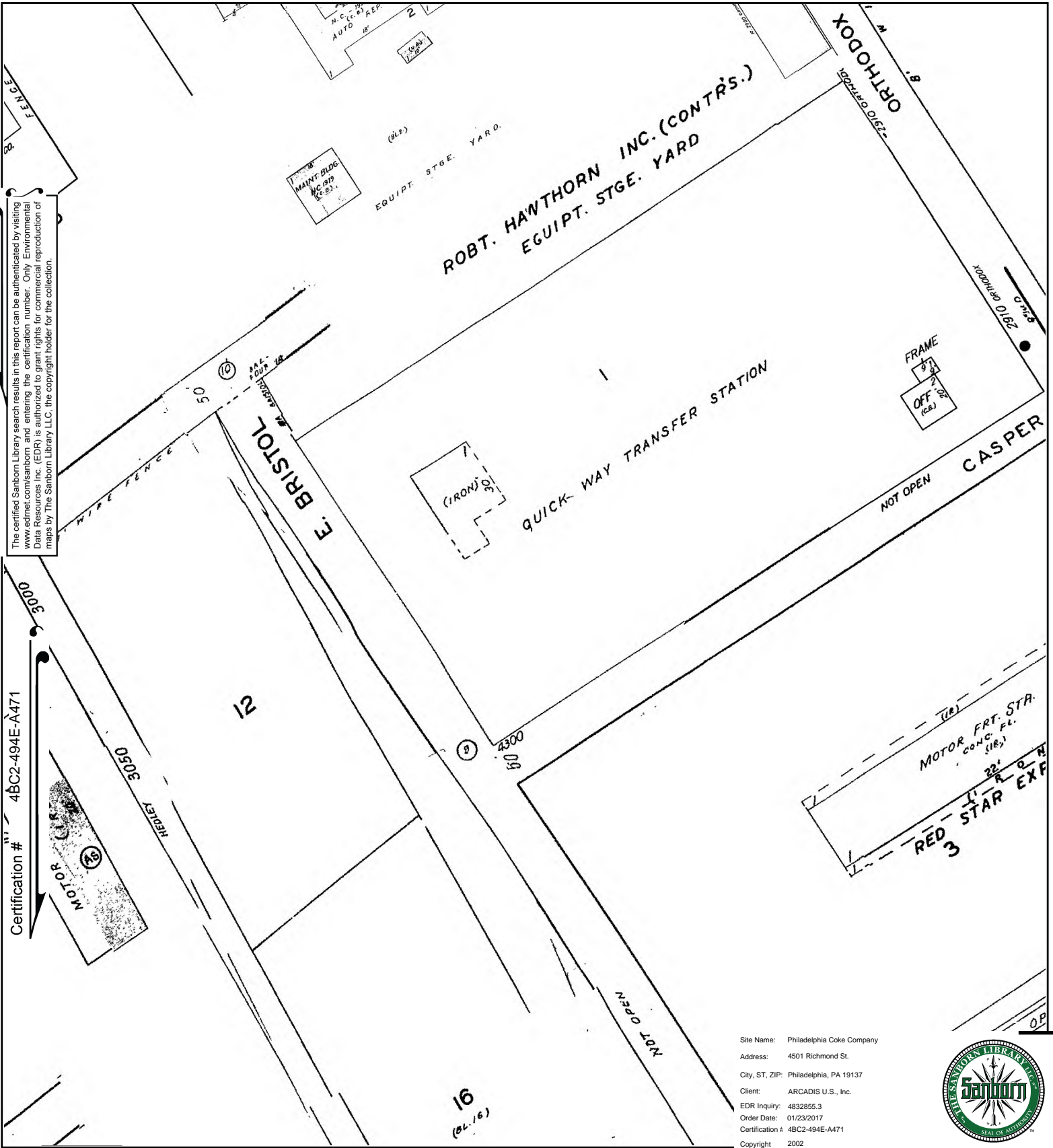


Volume 10, Sheet 989  
 Volume 10, Sheet 988  
 Volume 10, Sheet 975

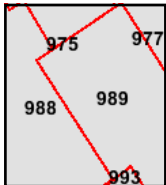
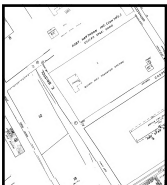
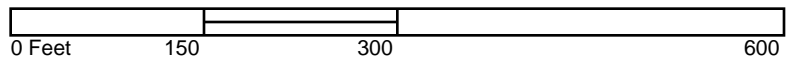








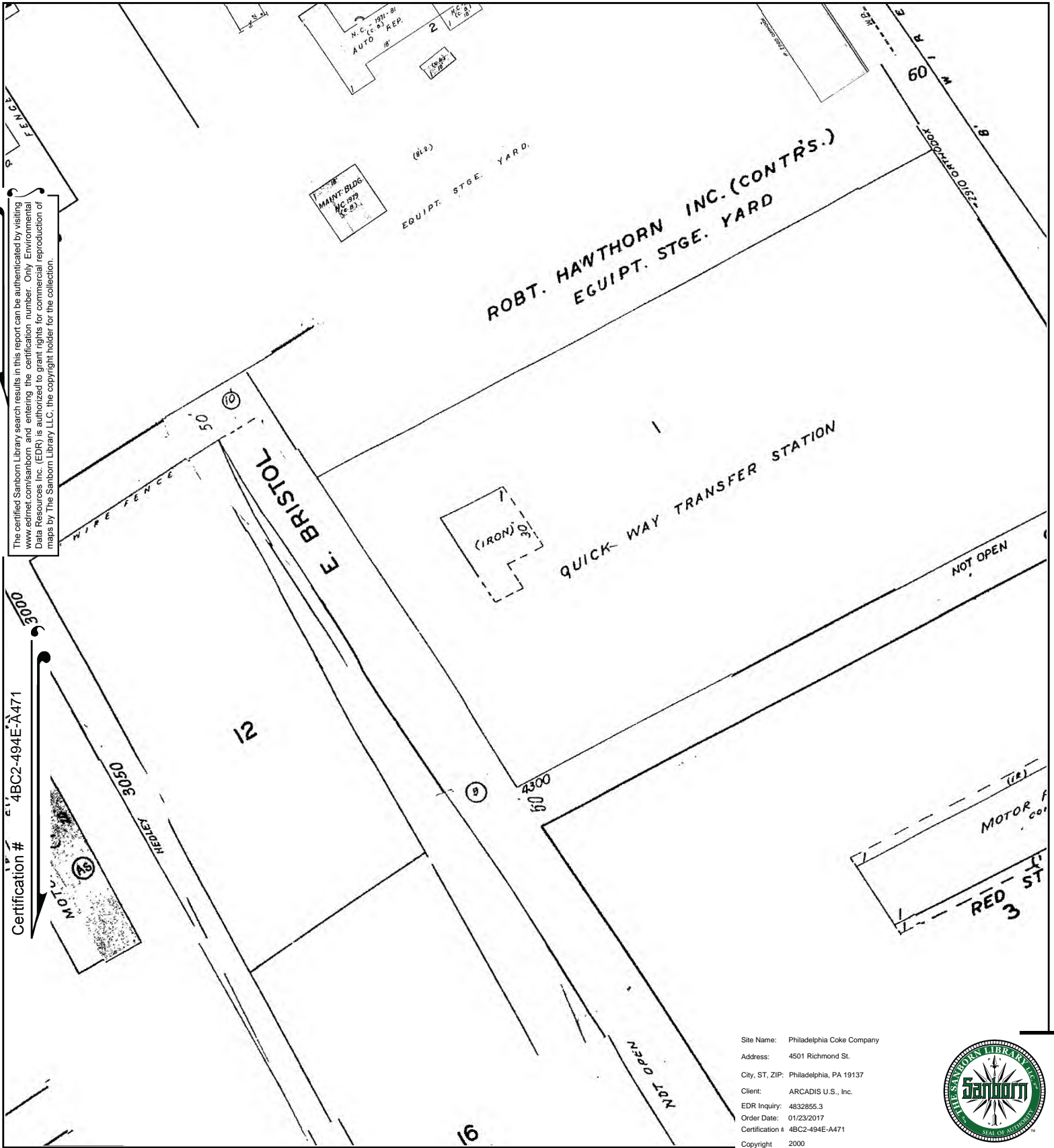
This Certified Sanborn Map combines the following sheets.  
 Outlined areas indicate map sheets within the collection.



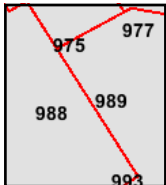
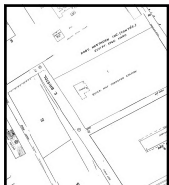
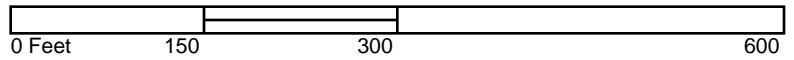
Volume 10, Sheet 989  
 Volume 10, Sheet 988  
 Volume 10, Sheet 975





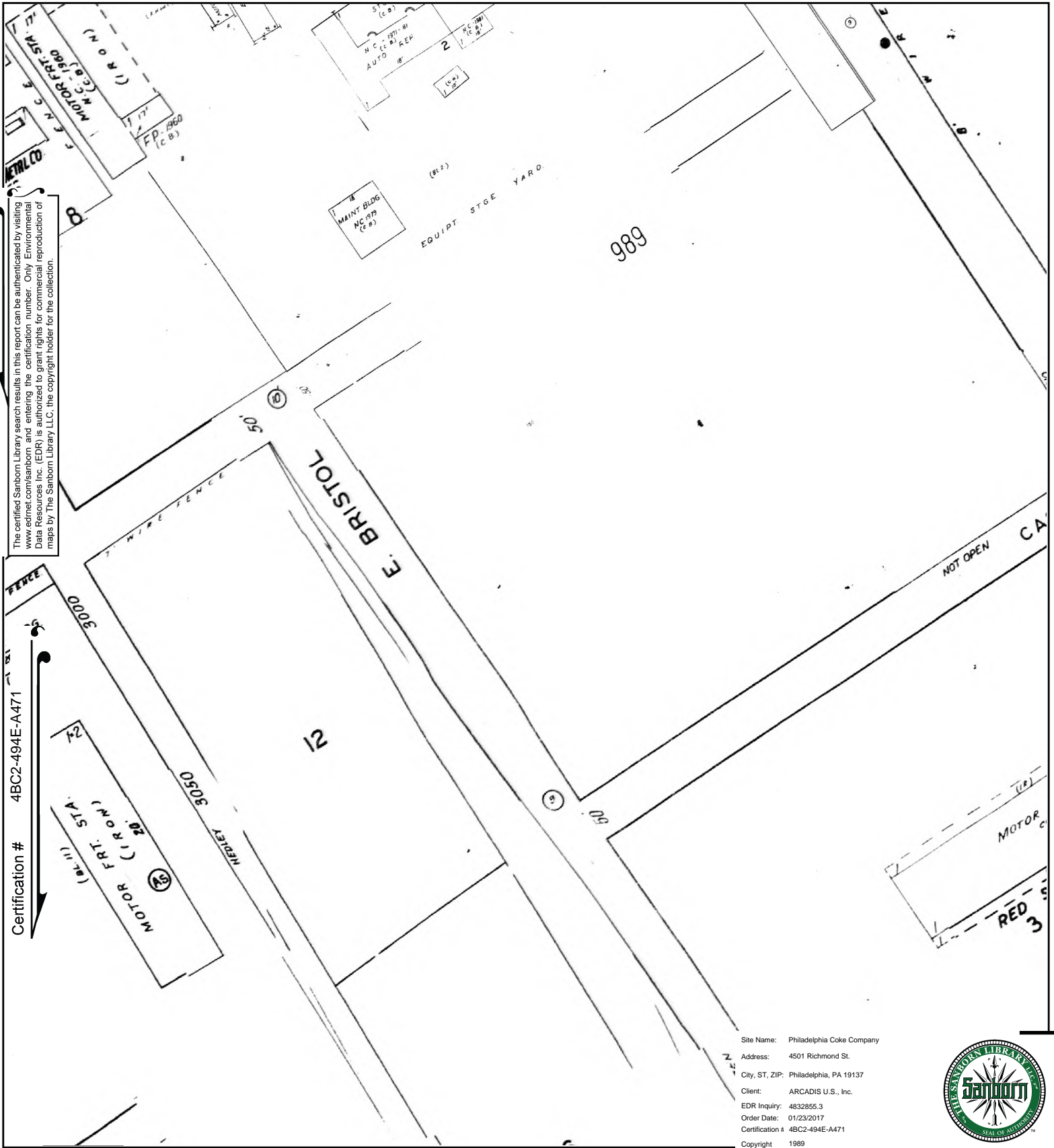


This Certified Sanborn Map combines the following sheets.  
 Outlined areas indicate map sheets within the collection.

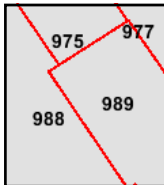
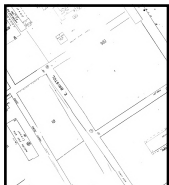


Volume 10, Sheet 988  
 Volume 10, Sheet 989  
 Volume 10, Sheet 975

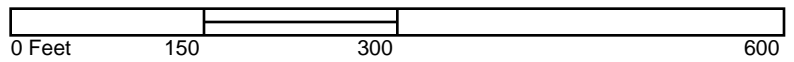


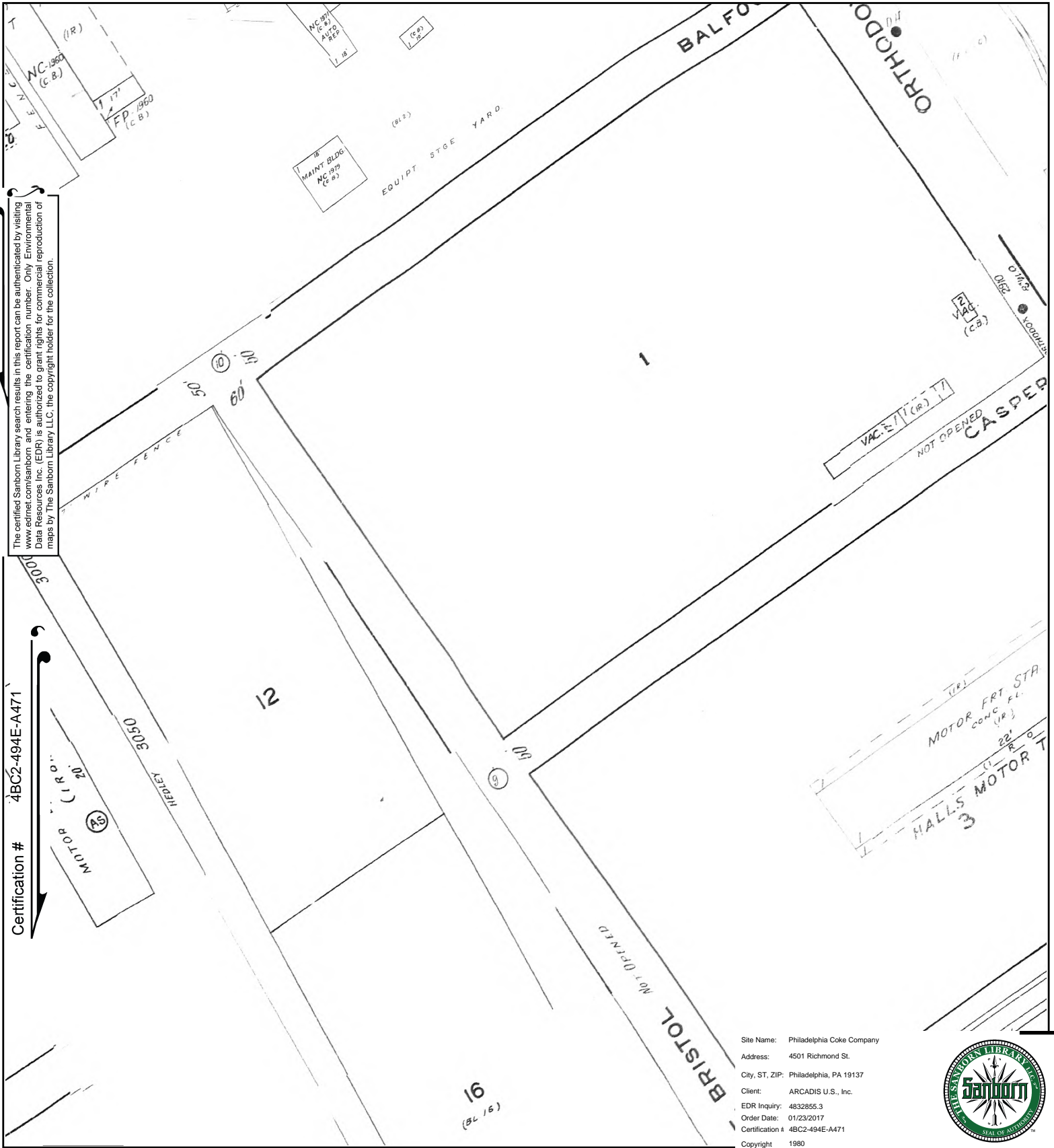


This Certified Sanborn Map combines the following sheets. Outlined areas indicate map sheets within the collection.

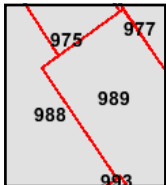
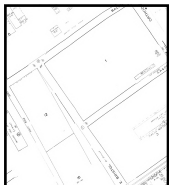


Volume 10, Sheet 989  
Volume 10, Sheet 988  
Volume 10, Sheet 975

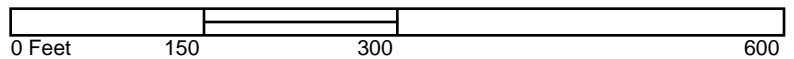


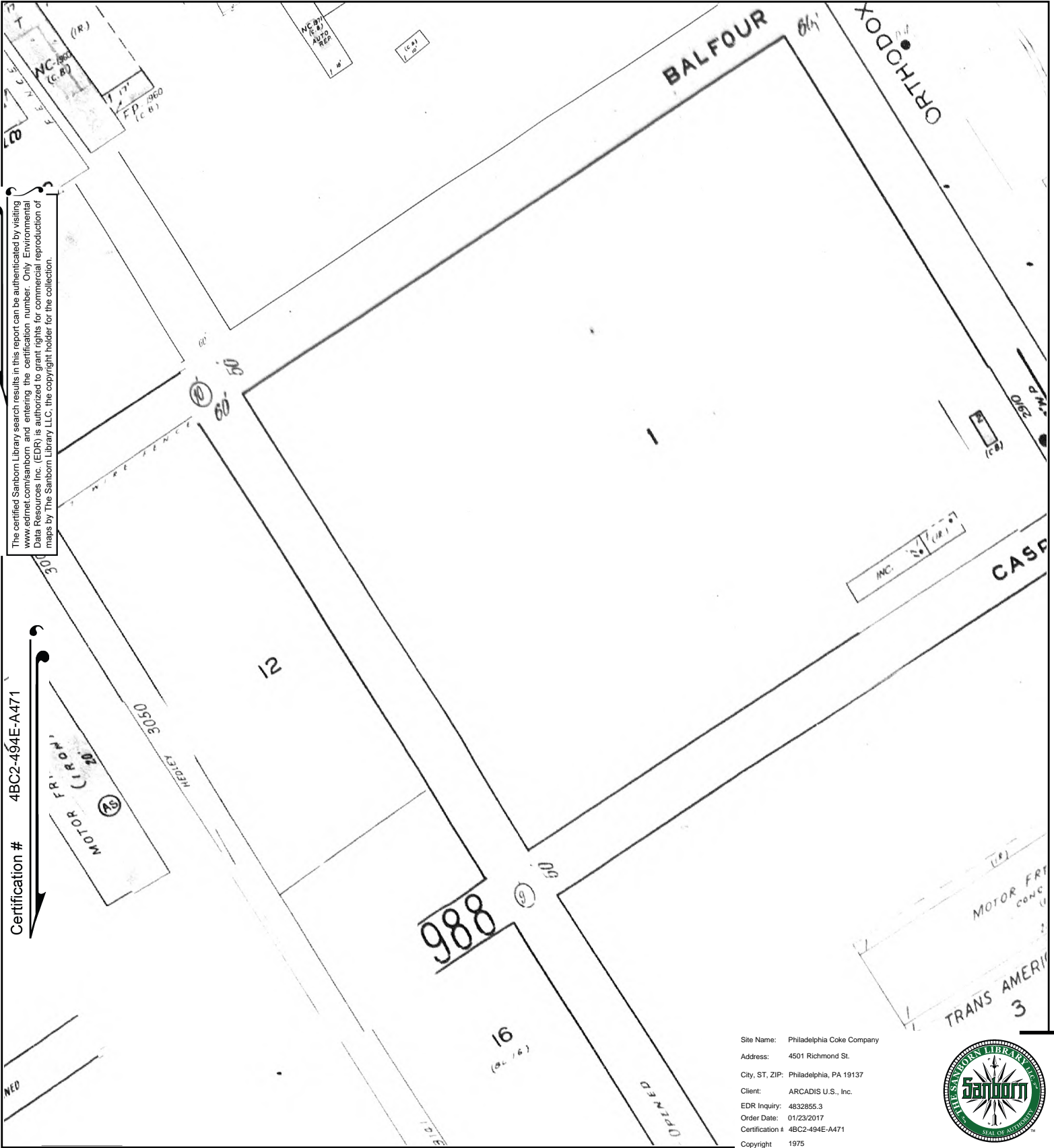


This Certified Sanborn Map combines the following sheets.  
 Outlined areas indicate map sheets within the collection.

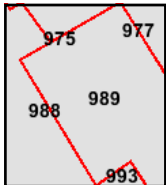
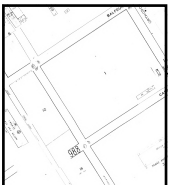
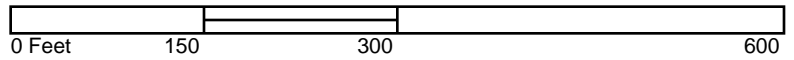


Volume 10, Sheet 989  
 Volume 10, Sheet 988  
 Volume 10, Sheet 975





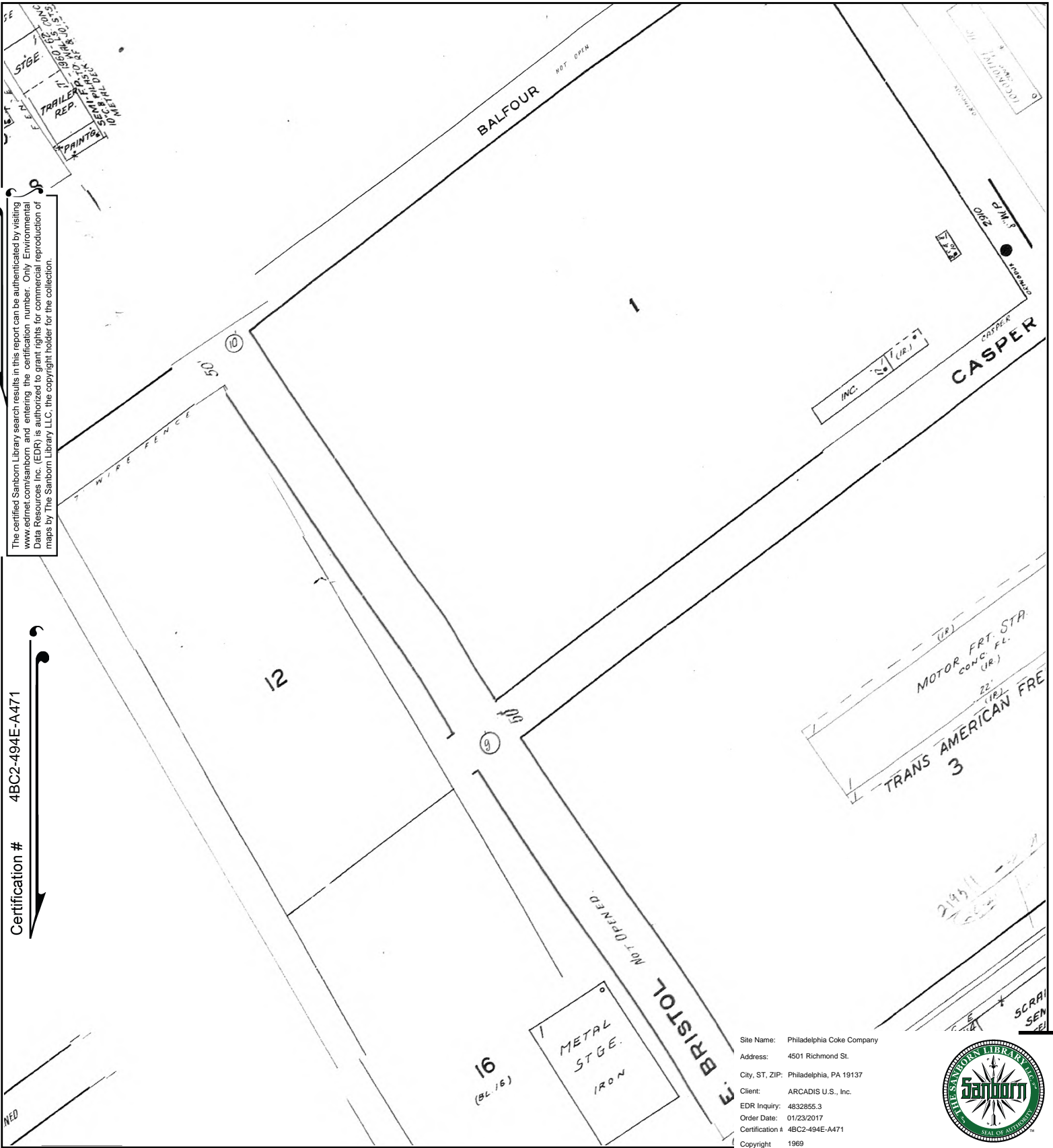
This Certified Sanborn Map combines the following sheets.  
 Outlined areas indicate map sheets within the collection.



Volume 10, Sheet 989  
 Volume 10, Sheet 988  
 Volume 10, Sheet 975







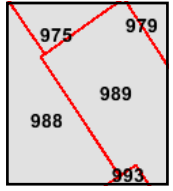
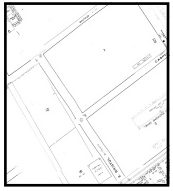
The certified Sanborn Library search results in this report can be authenticated by visiting [www.edrnet.com/sanborn](http://www.edrnet.com/sanborn) and entering the certification number. Only Environmental Data Resources Inc. (EDR) is authorized to grant rights for commercial reproduction of maps by The Sanborn Library LLC, the copyright holder for the collection.

Certification # 4BC2-494E-A471

Site Name: Philadelphia Coke Company  
 Address: 4501 Richmond St.  
 City, ST, ZIP: Philadelphia, PA 19137  
 Client: ARCADIS U.S., Inc.  
 EDR Inquiry: 4832855.3  
 Order Date: 01/23/2017  
 Certification # 4BC2-494E-A471  
 Copyright 1969



This Certified Sanborn Map combines the following sheets. Outlined areas indicate map sheets within the collection.

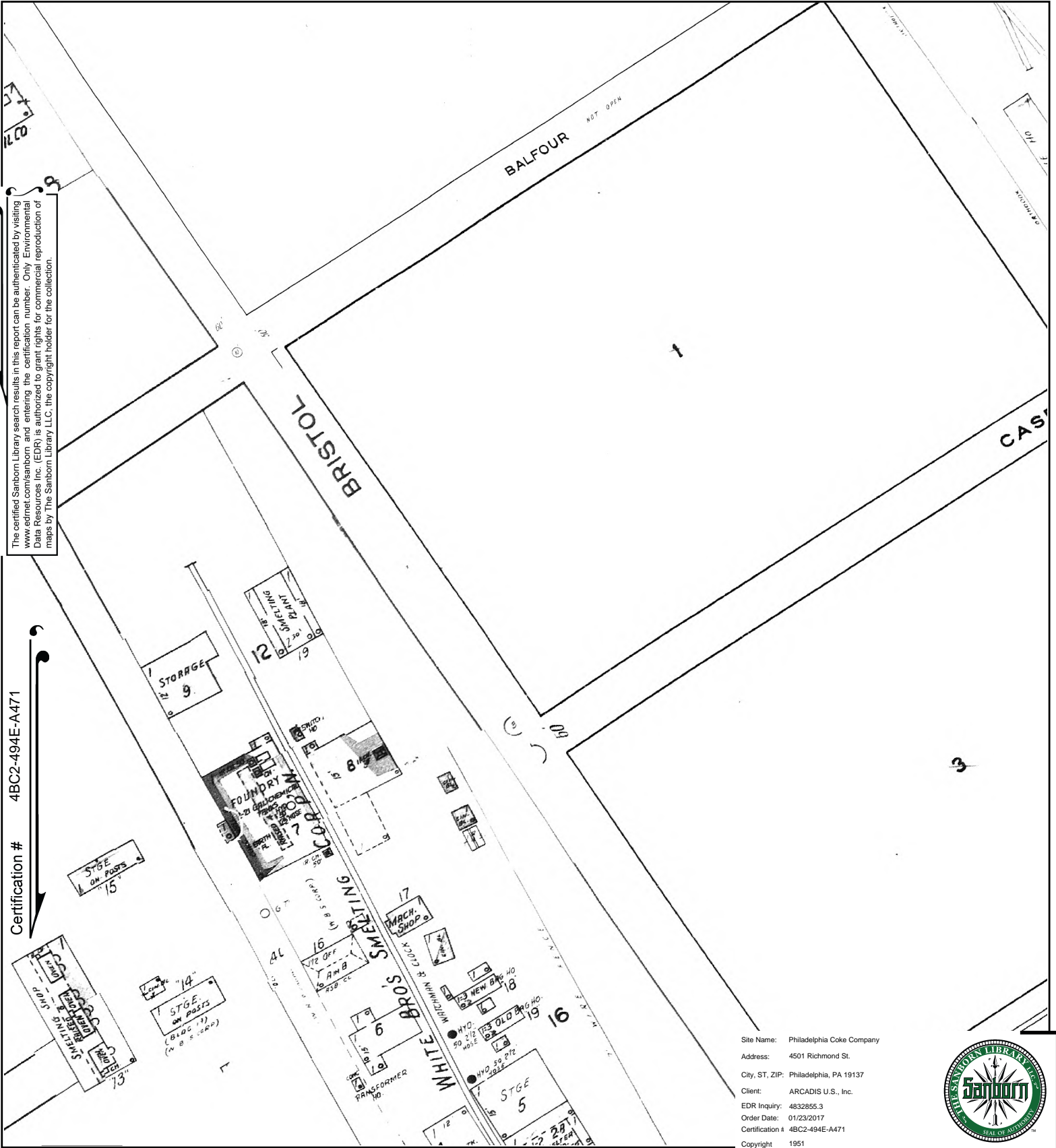


Volume 10, Sheet 989  
 Volume 10, Sheet 988  
 Volume 10, Sheet 975





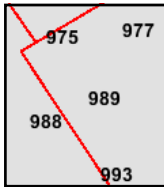
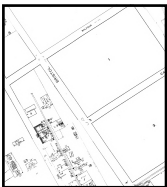
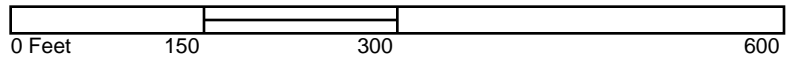
The certified Sanborn Library search results in this report can be authenticated by visiting [www.edrnet.com/sanborn](http://www.edrnet.com/sanborn) and entering the certification number. Only Environmental Data Resources Inc. (EDR) is authorized to grant rights for commercial reproduction of maps by The Sanborn Library LLC, the copyright holder for the collection.



Site Name: Philadelphia Coke Company  
 Address: 4501 Richmond St.  
 City, ST, ZIP: Philadelphia, PA 19137  
 Client: ARCADIS U.S., Inc.  
 EDR Inquiry: 4832855.3  
 Order Date: 01/23/2017  
 Certification # 4BC2-494E-A471  
 Copyright 1951

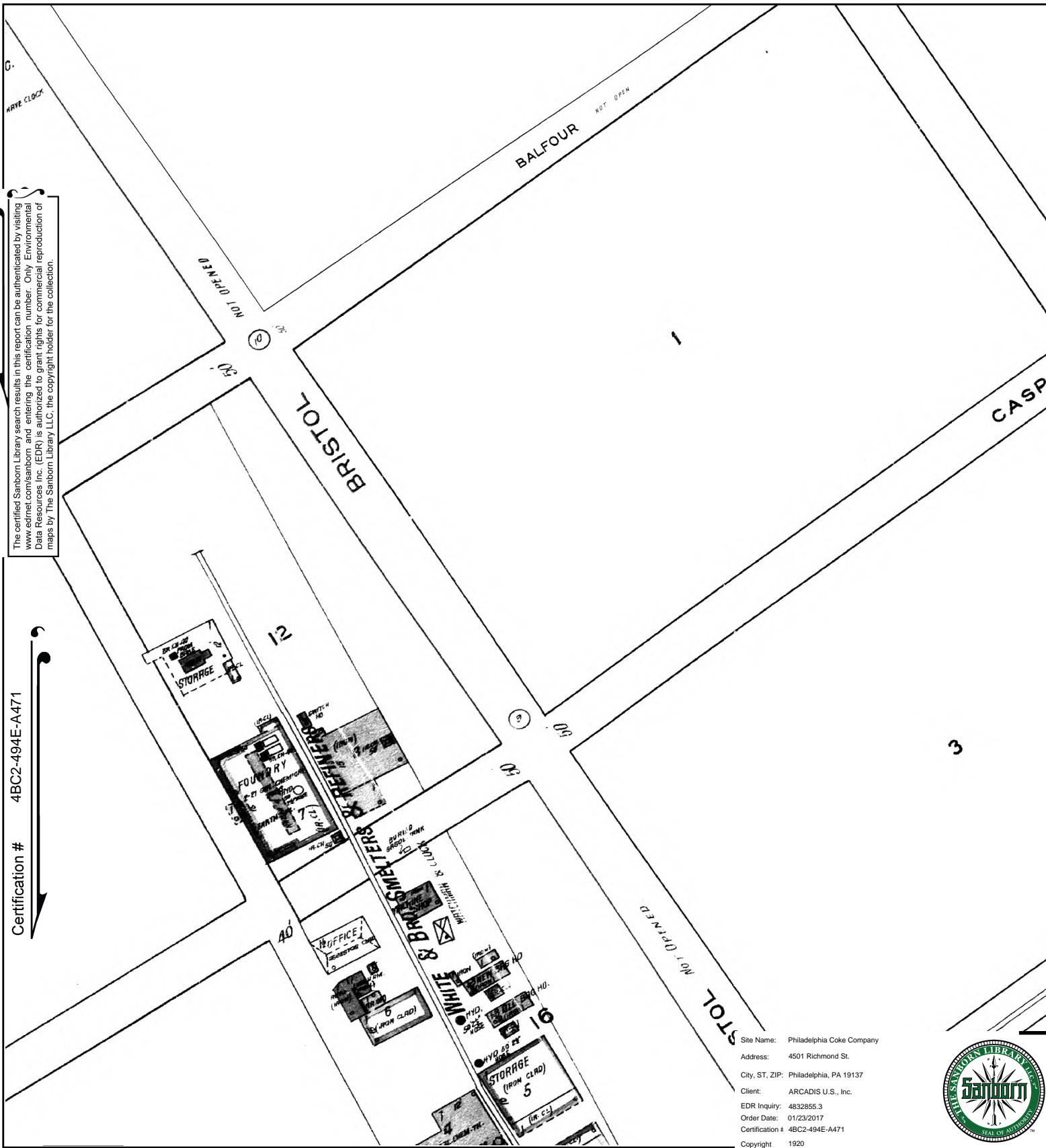


This Certified Sanborn Map combines the following sheets. Outlined areas indicate map sheets within the collection.

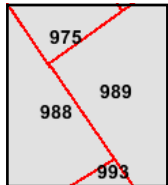
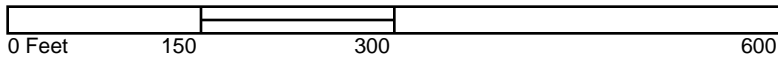


Volume 10, Sheet 989  
 Volume 10, Sheet 988  
 Volume 10, Sheet 975





This Certified Sanborn Map combines the following sheets.  
 Outlined areas indicate map sheets within the collection.



Volume 10, Sheet 989  
 Volume 10, Sheet 975  
 Volume 10, Sheet 993  
 Volume 10, Sheet 988

